

PFA

管材 / 管件 / 阀门 PIPE / FITTING / VALVE

EXPERT IN PIPING SYSTEM
管路系统的专家级工厂



微信公众号二维码



企业网站二维码

24h 400-928-1588

华生管道科技有限公司

地址: 常州市新北区空港产业园旺贤路9号(213133)
电话: +86 519-85201808 83201080
传真: +86 519-83201088 83201026
邮箱: sales@czhuasheng.com
claire@czhuasheng.com
网址: www.czhuasheng.com

HUASHENG PIPELINE TECHNOLOGY CO., LTD

Add: NO9, Wangxian Road, Konggang Industry Park, Xinbei District, Changzhou, 213133, China
Tel: +86 519-8520180 883201080
Fax: +86 519-83201088 83201026
Email: sales@czhuasheng.com
claire@czhuasheng.com
Web: www.huashengpipe.com

© 华生管道科技有限公司拥有该资料著作权及相关权利, 未经权利人许可, 不得擅自复制、发布、改编或者向公众传播。
Huasheng Pipeline Technology Co., Ltd owns the copyright and related rights of the data and it is not allowed to copy, publish, adapt or disseminate it to the public without the permission of the right holder.

HS-PFA-220301

华生管道科技有限公司
HUASHENG PIPELINE TECHNOLOGY CO., LTD

www.czhuasheng.com
www.huashengpipe.com



CONTENTS

目录

ABOUT US
关于我们

02

CERTIFICATIONS
资质证书

03

PRODUCT CATEGORY
产品类别

05

APPLICATIONS
行业应用

06



PIPES
管材

07

PFA PIPE SERIES AND SPECIFICATIONS
PFA管材系列和规格尺寸

08



PIPE FITTINGS
管件

09

PFA Butt Fusion 90 Degree Elbow PFA 对焊弯头	10
PFA Butt Fusion Tee PFA 对焊三通	11
PFA Butt Fusion Reducer PFA 对焊接头	12
PFA Male Connector Bore Through PFA 穿管接头	13
PFA Male Adaptor Sleeve-insert Type PFA 入珠外牙直通	14
PFA Female Adaptor Sleeve-insert Type PFA 入珠内牙直通	15
PFA Male 90 Degree Elbow Sleeve-insert Type PFA 入珠外牙弯头	16
PFA Tee Sleeve-insert Type PFA 入珠三通	17
PFA 90 Degree Spigot Elbow Sleeve-insert Type PFA 入珠直管弯头	18
PFA 90 Degree Elbow Sleeve-insert Type PFA 入珠弯头	19
PFA Connector Sleeve-insert Type PFA 入珠直通	20
PFA Cap Sleeve-insert Type PFA 入珠管堵	21
PTEF Plug PTFE 堵头	22
PFA Insert Sleeve PFA 入珠	23
PFA Panel Mount Connector Sleeve-insert Type PFA 入珠面板安装接头	24

PIPE FITTINGS
管件

25

PFA Pneumatic Diaphragm Valve Sleeve-insert Type PFA 入珠气动隔膜阀	26
PFA Hand-wheel Manual Diaphragm Valve Sleeve-insert Type PFA 入珠手轮式手动隔膜阀	27
PFA Toggle Manual Diaphragm Valve Sleeve-insert Type PFA 入珠肘杆式手动隔膜阀	28



Professional strength
builds easy life

专业实力构筑轻松生活



ABOUT US

关于我们



PFA 管材 / 管件 / 阀门

PFA PIPE/FITTING/VALVE

EXPERT IN PIPING SYSTEM

管路系统的专家级工厂

重信求实 华生企业的灵魂
开拓创新 永恒发展的动力

以质取胜、以质取信，为顾客提供满意的产品和服务。

▶ 公司简介 / Company Introduction

华生管道科技有限公司始建于 1988 年，坐落于江苏常州高新技术产业开发区，是一家集 UPVC、CPVC、PE、PPH、PVDF、PVDF-HP、PFA、AGR、PVC-UH 等材质的工业给水、环保水处理设备类塑料管道产品研发、制造于一体的管路系统专业生产企业。同时也是测量与控制仪表的专业的生产企业。经过多年的探索与提升，目前华生已成为行业内的领先企业，是江苏省塑料管道系统工程技术中心依托单位，中国塑料加工工业协会塑料管道专业委员会成员单位，中国电子材料行业协会成员单位。
Huasheng Pipeline Technology Co.,Ltd has been in business since 1988. The company is located in Changzhou High-Tech Industrial Development Zone, Jiangsu Province.

Huasheng is a professional pipeline system enterprise who is engaged in researching, developing and manufacturing all kinds of UPVC、CPVC、PE、PPH、PVDF、PVDF-HP、PFA、AGR、PVC-UH piping systems for industrial, water supply and water treatment applications. Moreover, it is also a specialized manufacturer of measurement and control instrumentation.

After years of exploration and improvement, now Huasheng is one of the leading enterprises in the industry: It is the supporting and sponsoring institution of Jiangsu Engineering Research Center for Plastic System, the member of the professional board of China Plastic Processing Industry Association (CPPIA), the member of China Electronics Materials Industry Association (CEMIA).

▶ 公司实力 / Company Strength

公司占地面积 20 万平方米，拥有固定资产 6 亿元人民币。公司现有员工 400 多人，下设模具事业部、管路系统事业部、精密注塑事业部，原料混配系统 10 套，造粒生产线 12 条，管材挤出生产线 30 条，注塑机 200 多台，大型加工中心等机械加工设备 80 多台，万级洁净厂房超过 7800 平方米，百级洁净厂房 200 平方米，专用于 PVDF、PVDF-HP、仪表的生产和检测。塑料管路年生产能力达 80000 吨，测量与控制仪表年生产能力超过 10000 套。

Huasheng Co., Ltd operates two modern factories of 200,000 square meters with fixed assets of 600 million yuan. The company has more than 400 employees and consists of mold division, piping system division, and precision injection molding division.

Huasheng owns 10 sets of raw material mixing systems, 12 granulation production lines, 30 pipe extrusion production lines, and more than 200 injection molding machines, over 80 sets of mechanical processing equipment such as large-scale machining centers, more than 7,800 m² of class 10,000 (ISO 14644-1 Class 7) cleanroom, and 200 m² of class 100 (ISO 14644-1 Class 5) cleanroom, dedicated to the production and testing of PVDF, PVDF-HP, and instrumentation.

The annual production capacity of plastic piping system is 80,000 tons. The annual production capacity of measuring and control instrumentation exceeds 10,000 sets.

▶ 资质和荣誉 / Qualifications and Awards

目前公司已经通过 ISO9001、ISO14001、ISO45001 等体系的认证，以及美国卫生基金会国际组织 NSF 认证。公司被认定为江苏省高新技术企业，“华生”商标荣获江苏省著名商标。拥有江苏省高新技术产品 6 项，授权专利 47 项，获得江苏省市场监督管理局颁发的《中华人民共和国特种设备制造许可证（压力管道元件）》和江苏省卫生健康委员会颁发的《涉水产品卫生行政许可批件》。

The company owns ISO9001, ISO14001, ISO45001 and other system certifications, as well as the US national sanitation foundation (NSF) certification. The company has been recognized as a high-tech enterprise of Jiangsu Province and the "Huasheng" trademark has been awarded as a famous Jiangsu trademark by Jiangsu Provincial Government. Huasheng owns 6 high-tech products of Jiangsu Province and 47 authorized patents. In addition, the company has obtained the "Manufacturing License for Special Equipment of the People's Republic of China (Pressure Pipeline Components)" issued by the Jiangsu Provincial Administration for Market Regulation and the "Administrative License for Sanitation of Water-related Products" issued by the Jiangsu Commission of Health (former Jiangsu Provincial Health and Family Planning Commission).

CERTIFICATIONS

资质证书

客户至上，优质高效，绿色环保，顾客满意。



PRODUCT CATEGORY

产品类别

▶ PFA系列管材

DIN: 1/4"-1"



管材 / PIPE

▶ PFA系列管件

对焊式管件: 1/4"-1"
Butt-fusion Fittings: 1/4"-1"
入珠式管件: 1/4"-1"
Sleeve-insert Fittings: 1/4"-1"



管件 / PIPE FITTING

▶ PFA系列阀门

入珠气动隔膜阀
Manual Diaphragm Valve Sleeve-insert Type
入珠手动隔膜阀
Pneumatic Diaphragm Valve Sleeve-insert Type



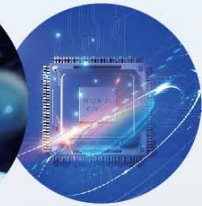
阀门 / VALVE

APPLICATIONS

行业应用



管路系统的专家级工厂 EXPERT IN PIPING SYSTEM



▪ 食品 ▪ 医疗 ▪ 半导体行业



PFA PIPE SERIES AND SPECIFICATIONS

PFA 管材系列和规格尺寸

PFA 管路系统生产环境为万级净化车间，并在百级净化车间内清洗，包装；

The production environment of PFA pipeline system is a class 10,000 (ISO14644-1 class 7) cleanroom, cleaning and packaging is in the cleanroom of class 100 (ISO14644-1 class 5) .

采用电子级PFA材料，符合SEMI F57离子析出要求；

Made of electronic grade PFA materials and meet the requirements of SEMI F57 ion precipitation;

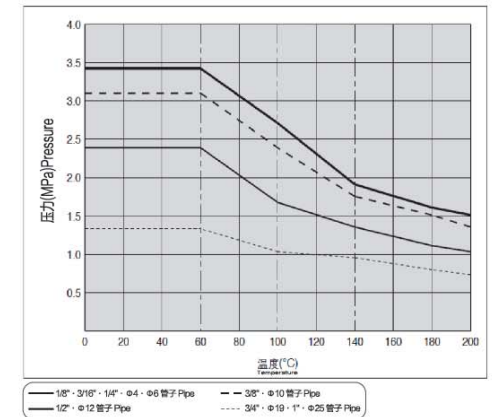
最高使用温度：200℃；

Maximum application temperature: 200℃；

广泛应用于食品，医疗，半导体行业；

Widely used in food, medical, semiconductor industries;

耐压及耐热性能: Pressure and Heat Resistance



产品参数

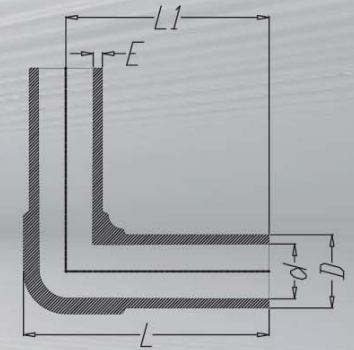
规格 Size	公制 Metric		
	外形尺寸 (mm) Dimensions		壁厚 mm Wall Thickness
	D	d	E
6	6	4	1
8	8	6	1
10	10	8	1
12	12	10	1
25	25	22	1.5

规格 Size	英制 Inch		
	外形尺寸 Dimensions 毫米 (英寸) mm (in)		壁厚 Wall Thickness mm (in)
	D	d	E
1/4"	6.35(0.25)	3.95(0.16)	1.2(0.05)
3/8"	9.53(0.38)	6.33(0.25)	1.6(0.06)
1/2"	12.7(0.5)	9.5(0.37)	1.6(0.06)
3/4"	19.0(0.75)	15.8(0.62)	1.6(0.06)
1"	25.4(1.0)	22.2(0.87)	1.6(0.06)



管材 PIPE

PFA BUTT FUSION 90 DEGREE ELBOW PFA 对焊弯头



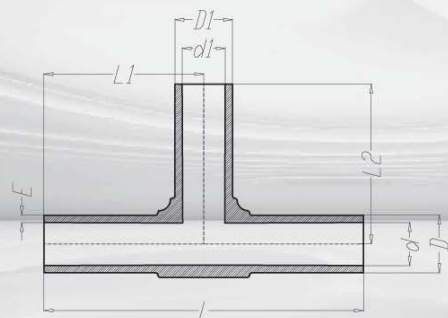
产品参数

规格 Size	Dimensions 外形尺寸 mm (inch)				
	D	d	L	L1	E
CWL-1/4"X1/4"	6.35(0.25)	4.1(0.16)	30(1.18)	26(1.02)	1.1(0.04)
CWL-3/8"X3/8"	9.53(0.38)	6.33(0.25)	38.02(1.5)	32.25(1.27)	1.6(0.06)
CWL-1/2"X1/2"	12.7(0.5)	9.5(0.37)	42.6(1.68)	35.25(1.39)	1.6(0.06)
CWL-1/2"X3/8"	12.7/9.5 (0.5/0.37)	9.5/6.3 (0.37/0.25)	42.6(1.68)	35.25(1.39)	1.6(0.06)
CWL-3/4"X3/4"	19(0.75)	15.8(0.62)	56(2.2)	45.5(1.79)	1.6(0.06)
CWL-3/4"X1/2"	19/12.7 (0.75/0.5)	15.8/9.5 (0.62/0.37)	51(2.01)	40(1.57)	1.6(0.06)
CWL-1"X1"	25.4(1)	22.2(0.87)	68.2(2.69)	54.5(2.15)	1.6(0.06)
CWL-1"X3/4"	25.4/19 (1/0.75)	22.2/15.8 (0.87/0.62)	61.2(2.41)	51.3(2.02)	1.6(0.06)
CWL-1"X1/2"	25.4/12.7 (1/0.5)	22.2/9.5 (0.87/0.37)	55.7(2.19)	48.1(1.89)	1.6(0.06)

管件 PIPE FITTING

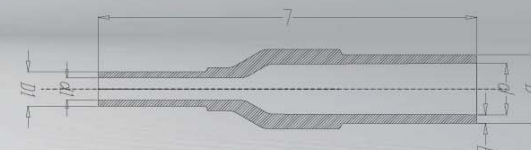
PFA BUTT FUSION TEE

PFA 对焊三通



PFA BUTT FUSION REDUCER

PFA 对焊接头



产品参数

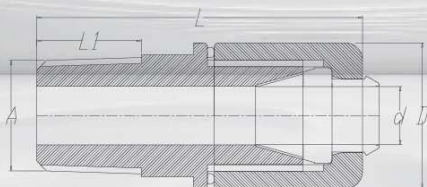
规格 Size	Dimensions 外形尺寸 mm (inch)							
	D	d	D1	d1	L	L1	L2	E
CWT-1/4"X1/4"X1/4"	6.35(0.25)	4.1(0.16)	6.35(0.25)	4.1(0.16)	52.5(2.07)	26(1.02)	26(1.02)	1.1(0.04)
CWT-3/8"X3/8"X3/8"	9.53(0.38)	6.33(0.25)	9.53(0.38)	6.33(0.25)	64.5(2.54)	32.25(1.27)	32.25(1.27)	1.6(0.06)
CWT-1/2"X3/8"X1/2"	12.7(0.5)	9.5(0.37)	9.53(0.38)	6.33(0.25)	67.5(2.66)	33.75(1.33)	35.25(1.39)	1.6(0.06)
CWT-1/2"X1/2"X1/2"	12.7(0.5)	9.5(0.37)	12.7(0.5)	9.5(0.37)	70.5(2.78)	35.25(1.39)	35.25(1.39)	1.6(0.06)
CWT-3/4"X1/4"X3/4"	19(0.75)	15.8(0.62)	6.35(0.25)	4.1(0.16)	82(3.23)	41(1.61)	35(1.38)	1.6(0.06)
CWT-3/4"X3/8"X3/4"	19(0.75)	15.8(0.62)	9.53(0.38)	6.33(0.25)	85(3.35)	42.5(1.67)	40(1.57)	1.6(0.06)
CWT-3/4"X1/2"X3/4"	19(0.75)	15.8(0.62)	12.7(0.5)	9.5(0.37)	85(3.35)	42.5(1.67)	40.5(1.59)	1.6(0.06)
CWT-3/4"X3/4"X3/4"	19(0.75)	15.8(0.62)	19(0.75)	15.8(0.62)	91(3.58)	45.5(1.79)	45.5(1.79)	1.6(0.06)
CWT-1"X1/2"X1"	25.4(1)	22.2(0.87)	12.7(0.5)	9.5(0.37)	96.4(3.8)	48.2(1.9)	42(1.65)	1.6(0.06)
CWT-1"X3/4"X1"	25.4(1)	22.2(0.87)	19(0.75)	15.8(0.62)	102.6(4.04)	51.3(2.02)	47.5(1.87)	1.6(0.06)
CWT-1"X1"X1"	25.4(1)	22.2(0.87)	25.4(1)	22.2(0.87)	109(4.29)	54.5(2.15)	54.5(2.15)	1.6(0.06)

产品参数

规格 Size	Dimensions 外形尺寸 mm (inch)					
	D	d	D1	d1	L	E
CWR-3/8"X1/4"	9.53(0.38)	6.33(0.25)	6.35(0.25)	4.1(0.16)	65(2.56)	1.6/1.1 (0.06/0.04)
CWR-1/2"X1/4"	12.7(0.5)	9.5(0.37)	6.35(0.25)	4.1(0.16)	70(2.76)	1.6/1.1 (0.06/0.04)
CWR-1/2"X3/8"	12.7(0.5)	9.5(0.37)	9.53(0.38)	6.33(0.25)	75(2.95)	1.6(0.06)
CWR-3/4"X3/8"	19(0.75)	15.8(0.62)	9.53(0.38)	6.33(0.25)	85.5(3.37)	1.6(0.06)
CWR-3/4"X1/2"	19(0.75)	15.8(0.62)	12.7(0.5)	9.5(0.37)	85(3.35)	1.6(0.06)
CWR-1"X3/8"	25.4(1)	22.2(0.87)	9.53(0.38)	6.33(0.25)	92.5(3.64)	1.6(0.06)
CWR-1"X1/2"	25.4(1)	22.2(0.87)	12.7(0.5)	9.5(0.37)	92.5(3.64)	1.6(0.06)
CWR-1"X3/4"	25.4(1)	22.2(0.87)	19(0.75)	15.8(0.62)	98(3.86)	1.6(0.06)

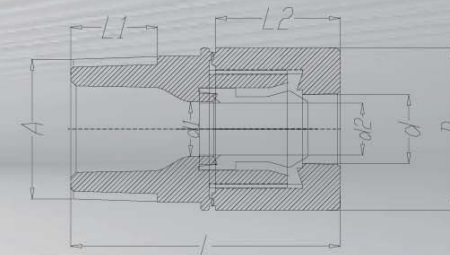
PFA MALE CONNECTOR BORE THROUGH

PFA 穿管接头



PFA MALE ADAPTOR SLEEVE-INSERT TYPE

PFA 入珠外牙直通



产品参数

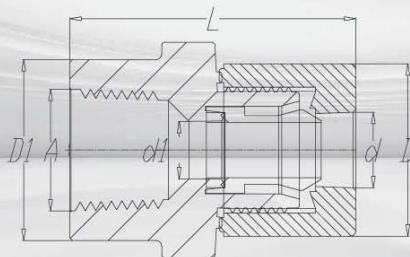
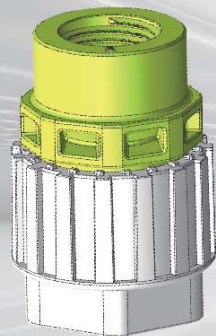
规格 Size	Dimensions 外形尺寸 mm (inch)				
	D	d	L	L1	A
CLQHB-6-N	17(0.67)	6.1(0.24)	37.4(1.47)	12(0.47)	NPT1/4"
CLQHB-1/4"-N	17(0.67)	6.4(0.25)	37.4(1.47)	12(0.47)	NPT1/4"
CLQHB-3/8"-N	23(0.91)	9.5(0.37)	49.8(1.96)	12.5(0.49)	NPT3/8"
CLQHB-3/8"X1/2"-N	30(1.18)	12.7(0.5)	50.8(2)	16(0.63)	NPT1/2"
CLQHB-1/2"-N	30(1.18)	12.7(0.5)	50.8(2)	16(0.63)	NPT1/2"
CLQHB-3/4"-N	40.6(1.6)	19(0.75)	57.3(2.26)	16(0.63)	NPT3/4"
CLQHB-1"-N	49(1.93)	25.4(1)	63.4(2.49)	18(0.71)	NPT1"
CLQHB-1/4"-R	17(0.67)	6.4(0.25)	37.4(1.47)	12(0.47)	R1/4"
CLQHB-3/8"-R	23(0.91)	9.5(0.37)	49.8(1.96)	12.5(0.49)	R3/8"
CLQHB-3/8"X1/2"-R	30(1.18)	12.7(0.5)	50.8(2)	16(0.63)	R1/2"
CLQHB-1/2"-R	30(1.18)	12.7(0.5)	50.8(2)	16(0.63)	R1/2"
CLQHB-3/4"-R	40.6(1.6)	19(0.75)	57.3(2.26)	16(0.63)	R3/4"
CLQHB-1"-R	49(1.93)	25.4(1)	63.4(2.49)	18(0.71)	R1"

产品参数

规格 Size	Dimensions 外形尺寸 mm (inch)							
	D	d	d1	d2	L	L1	L2	A
CLQ1H-1/4"-MN	17(0.67)	6.4(0.25)	3.9(0.15)	3.2(0.13)	37.4(1.47)	12(0.47)	17(0.67)	NPT1/4"
CLQ1H-3/8"X1/2"-MN	23(0.91)	9.7(0.38)	6.6(0.26)	8(0.31)	46.4(1.83)	16(0.63)	20(0.79)	NPT1/2"
CLQ1H-3/8"-MN	23(0.91)	9.7(0.38)	6.6(0.26)	8(0.31)	42.4(1.67)	12.5(0.49)	20(0.79)	NPT3/8"
CLQ1H-1/2"X3/8"-MN	30(1.18)	12.7(0.5)	10.1(0.4)	9.6(0.38)	45(1.77)	12.5(0.49)	23(0.91)	NPT3/8"
CLQ1H-1/2"X3/4"-MN	30(1.18)	12.7(0.5)	10.1(0.4)	9.6(0.38)	49.8(1.96)	16(0.63)	23(0.91)	NPT3/4"
CLQ1H-1/2"-MN	30(1.18)	12.7(0.5)	8.9(0.35)	9.6(0.38)	50.8(2)	16(0.63)	23(0.91)	NPT1/2"
CLQ1H-3/4"X1/2"-MN	40.6(1.6)	19(0.75)	6.6(0.26)	15.8(0.62)	57.3(2.26)	16(0.63)	33(1.3)	NPT1/2"
CLQ1H-3/4"-MN	40.6(1.6)	19(0.75)	15.3(0.6)	15.8(0.62)	57.3(2.26)	16(0.63)	33(1.3)	NPT3/4"
CLQ1H-3/4"X1"-MN	40.6(1.6)	19(0.75)	16.2(0.64)	15.8(0.62)	59.3(2.33)	18(0.71)	33(1.3)	NPT1"
CLQ1H-1"X3/4"-MN	49(1.93)	25.4(1)	15.3(0.6)	22.2(0.87)	62(2.44)	16(0.63)	37(1.46)	NPT3/4"
CLQ1H-1"-MN	49(1.93)	25.4(1)	20.6(0.81)	22.2(0.87)	63.4(2.5)	18(0.71)	37(1.46)	NPT1"
CLQ1H-1/4"-MR	17(0.67)	6.4(0.25)	3.9(0.15)	3.2(0.13)	37.4(1.47)	12(0.47)	17(0.67)	R1/4"
CLQ1H-3/8"X1/2"-MR	23(0.91)	9.7(0.38)	6.6(0.26)	8(0.31)	46.4(1.83)	16(0.63)	20(0.79)	R1/2"
CLQ1H-3/8"-MR	23(0.91)	9.7(0.38)	6.6(0.26)	8(0.31)	42.4(1.67)	12.5(0.49)	20(0.79)	R3/8"
CLQ1H-1/2"X3/8"-MR	30(1.18)	12.7(0.5)	10.1(0.4)	9.6(0.38)	45(1.77)	12.5(0.49)	23(0.91)	R3/8"
CLQ1H-1/2"X3/4"-MR	30(1.18)	12.7(0.5)	10.1(0.4)	9.6(0.38)	49.8(1.96)	16(0.63)	23(0.91)	R3/4"
CLQ1H-1/2"-MR	30(1.18)	12.7(0.5)	8.9(0.35)	9.6(0.38)	50.8(2)	16(0.63)	23(0.91)	R1/2"
CLQ1H-3/4"X1/2"-MR	40.6(1.6)	19(0.75)	6.6(0.26)	15.8(0.62)	57.3(2.26)	16(0.63)	33(1.3)	R1/2"
CLQ1H-3/4"-MR	40.6(1.6)	19(0.75)	15.3(0.6)	15.8(0.62)	57.3(2.26)	16(0.63)	33(1.3)	R3/4"
CLQ1H-3/4"X1"-MR	40.6(1.6)	19(0.75)	16.2(0.64)	15.8(0.62)	59.3(2.33)	18(0.71)	33(1.3)	R1"
CLQ1H-1"X3/4"-MR	49(1.93)	25.4(1)	15.3(0.6)	22.2(0.87)	62(2.44)	16(0.63)	37(1.46)	R3/4"
CLQ1H-1"-MR	49(1.93)	25.4(1)	20.6(0.81)	22.2(0.87)	63.4(2.5)	18(0.71)	37(1.46)	R1"

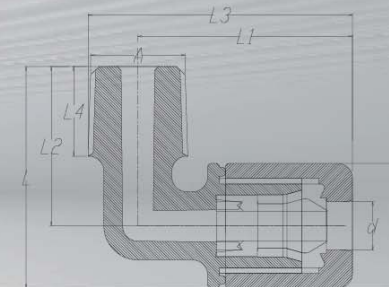
PFA FEMALE ADAPTOR SLEEVE-INSERT TYPE

PFA 入珠内牙直通



PFA MALE 90 DEGREE ELBOW SLEEVE-INSERT TYPE

PFA 入珠外牙弯头



产品参数

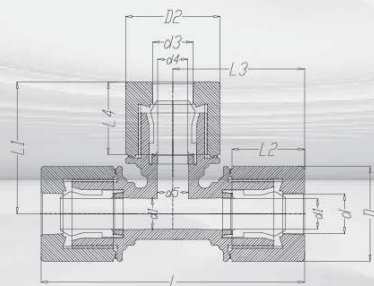
规格 Size	Dimensions 外形尺寸 mm (inch)					
	D	d	d1	L	D1	A
CLQ1HF-1/4"-MN	17(0.67)	6.4(0.25)	3.9(0.15)	37.3(1.47)	21.5(0.85)	NPT1/4"
CLQ1HF-3/8"X1/2"-MN	23(0.91)	9.7(0.38)	6.6(0.26)	47.2(1.86)	31.5(1.24)	NPT1/2"
CLQ1HF-3/8"-MN	23(0.91)	9.7(0.38)	6.6(0.26)	47.2(1.86)	26(1.02)	NPT3/8"
CLQ1HF-1/2"X3/8"-MN	30(1.18)	12.7(0.5)	10.1(0.4)	46(1.81)	26(1.02)	NPT3/8"
CLQ1HF-1/2"X3/4"-MN	30(1.18)	12.7(0.5)	10.1(0.4)	52(2.05)	38(1.5)	NPT3/4"
CLQ1HF-1/2"-MN	30(1.18)	12.7(0.5)	8.9(0.35)	50(1.97)	31.5(1.24)	NPT1/2"
CLQ1HF-3/4"X1/2"-MN	40.6(1.6)	19(0.75)	6.6(0.26)	59.3(2.33)	31.5(1.24)	NPT1/2"
CLQ1HF-3/4"-MN	40.6(1.6)	19(0.75)	15.3(0.6)	59.3(2.33)	38(1.5)	NPT3/4"
CLQ1HF-3/4"X1"-MN	40.6(1.6)	19(0.75)	16.2(0.64)	67.3(2.65)	45.5(1.79)	NPT1"
CLQ1HF-1"X3/4"-MN	49(1.93)	25.4(1)	15.3(0.6)	59.9(2.36)	38(1.5)	NPT3/4"
CLQ1HF-1"-MN	49(1.93)	25.4(1)	20.6(0.81)	67.9(2.67)	45.5(1.79)	NPT1"
CLQ1HF-1/4"-MR	17(0.67)	6.4(0.25)	3.9(0.15)	37.3(1.47)	21.5(0.85)	R1/4"
CLQ1HF-3/8"X1/2"-MR	23(0.91)	9.7(0.38)	6.6(0.26)	47.2(1.86)	31.5(1.24)	R1/2"
CLQ1HF-3/8"-MR	23(0.91)	9.7(0.38)	6.6(0.26)	47.2(1.86)	26(1.02)	R3/8"
CLQ1HF-1/2"X3/8"-MR	30(1.18)	12.7(0.5)	10.1(0.4)	46(1.81)	26(1.02)	R3/8"
CLQ1HF-1/2"X3/4"-MR	30(1.18)	12.7(0.5)	10.1(0.4)	52(2.05)	38(1.5)	R3/4"
CLQ1HF-1/2"-MR	30(1.18)	12.7(0.5)	8.9(0.35)	50(1.97)	31.5(1.24)	R1/2"
CLQ1HF-3/4"X1/2"-MR	40.6(1.6)	19(0.75)	6.6(0.26)	59.3(2.33)	31.5(1.24)	R1/2"
CLQ1HF-3/4"-MR	40.6(1.6)	19(0.75)	15.3(0.6)	59.3(2.33)	38(1.5)	R3/4"
CLQ1HF-3/4"X1"-MR	40.6(1.6)	19(0.75)	16.2(0.64)	67.3(2.65)	45.5(1.79)	R1"
CLQ1HF-1"X3/4"-MR	49(1.93)	25.4(1)	15.3(0.6)	59.9(2.36)	38(1.5)	R3/4"
CLQ1HF-1"-MR	49(1.93)	25.4(1)	20.6(0.81)	67.9(2.67)	45.5(1.79)	R1"

产品参数

规格 Size	Dimensions 外形尺寸 mm (inch)							
	D	d	L	L1	L2	L3	L4	A
CLQ1L-1/4"-MN	17(0.67)	6.4(0.25)	29.7(1.17)	28.7(1.13)	21.3(0.84)	35.4(1.39)	12(0.47)	NPT1/2"
CLQ1L-3/8"-MN	23(0.91)	9.7(0.38)	37.5(1.48)	31(1.22)	25.5(1)	41(1.61)	12.5(0.49)	NPT3/4"
CLQ1L-1/2"-MN	30(1.18)	12.7(0.5)	47(1.85)	41.8(1.65)	32(1.26)	52.5(2.07)	16(0.63)	NPT1/2"
CLQ1L-3/4"-MN	40.6(1.6)	19(0.75)	58.3(2.3)	57.3(2.26)	38(1.5)	70.7(2.78)	16(0.63)	NPT3/4"
CLQ1L-1"-MN	49(1.93)	25.4(1)	68.9(2.71)	66.5(2.62)	44.2(1.74)	83.2(3.28)	18(0.71)	NPT1"
CLQ1L-1/4"-MR	17(0.67)	6.4(0.25)	29.7(1.17)	28.7(1.13)	21.3(0.84)	35.4(1.39)	12(0.47)	R1/4"
CLQ1L-3/8"-MR	23(0.91)	9.7(0.38)	37.5(1.48)	31(1.22)	25.5(1)	41(1.61)	12.5(0.49)	R3/8"
CLQ1L-1/2"-MR	30(1.18)	12.7(0.5)	47(1.85)	41.8(1.65)	32(1.26)	52.5(2.07)	16(0.63)	R1/2"
CLQ1L-3/4"-MR	40.6(1.6)	19(0.75)	58.3(2.3)	57.3(2.26)	38(1.5)	70.7(2.78)	16(0.63)	R3/4"
CLQ1L-1"-MR	49(1.93)	25.4(1)	68.9(2.71)	66.5(2.62)	44.2(1.74)	83.2(3.28)	18(0.71)	R1"

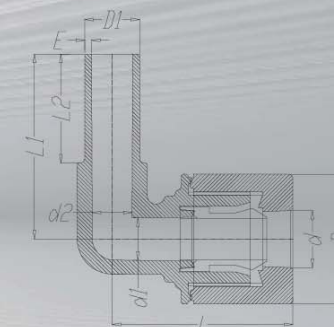
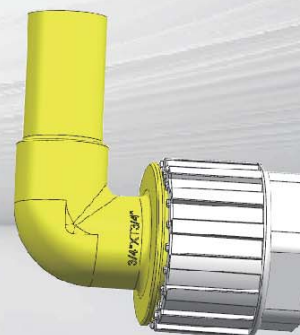
PFA TEE SLEEVE-INSERT TYPE

PFA 入珠三通



PFA 90 DEGREE SPIGOT ELBOW SLEEVE-INSERT TYPE

PFA 入珠直管弯头



产品参数

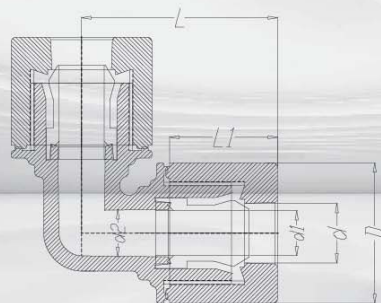
规格 Size	Dimensions 外形尺寸 mm (inch)												
	D	d	d1	d2	D2	d3	d4	d5	L	L1	L2	L3	L4
CLQ1T-1/4"X1/4"X1/4"	17(0.67)	6.4(0.25)	3.9(0.15)	3.2(0.13)	17(0.67)	6.4(0.25)	3.9(0.15)	3.2(0.13)	57.4(2.26)	28.7(1.13)	17(0.67)	28.7(1.13)	17(0.67)
CLQ1T-3/8"X1/4"X3/8"	23(0.91)	9.7(0.38)	6.5(0.26)	6.7(0.26)	17(0.67)	6.4(0.25)	3.9(0.15)	3.2(0.13)	63.2(2.49)	32.4(1.28)	20(0.79)	31.6(1.24)	17(0.67)
CLQ1T-3/8"X3/8"X3/8"	23(0.91)	9.7(0.38)	6.5(0.26)	6.7(0.26)	23(0.91)	9.7(0.38)	6.5(0.26)	6.7(0.26)	69.8(2.75)	35.1(1.38)	20(0.79)	34.9(1.37)	20(0.79)
CLQ1T-1/2"X1/4"X1/2"	30(1.18)	12.7(0.5)	9.6(0.38)	9.8(0.39)	17(0.67)	6.4(0.25)	3.9(0.15)	3.2(0.13)	71(2.8)	36(1.42)	23(0.91)	35.5(1.4)	17(0.67)
CLQ1T-1/2"X3/8"X1/2"	30(1.18)	12.7(0.5)	9.6(0.38)	9.8(0.39)	23(0.91)	9.7(0.38)	6.5(0.26)	6.3(0.25)	77.2(3.04)	38.8(1.53)	23(0.91)	38.6(1.52)	20(0.79)
CLQ1T-1/2"X1/2"X1/2"	30(1.18)	12.7(0.5)	9.6(0.38)	9.8(0.39)	30(1.18)	12.7(0.5)	9.6(0.38)	9.8(0.39)	83.2(3.28)	41.4(1.63)	23(0.91)	41.6(1.64)	23(0.91)
CLQ1T-3/4"X1/4"X3/4"	40.6(1.6)	19(0.75)	15.8(0.62)	16(0.63)	23(0.91)	9.7(0.38)	6.5(0.26)	6.3(0.25)	95.3(7.4)	40.5(1.59)	33(1.3)	47.5(1.87)	20(0.79)
CLQ1T-3/4"X3/8"X3/4"	40.6(1.6)	19(0.75)	15.8(0.62)	16(0.63)	23(0.91)	9.7(0.38)	6.5(0.26)	6.3(0.25)	98(3.86)	43.4(1.71)	33(1.3)	49(1.93)	20(0.79)
CLQ1T-3/4"X1/2"X3/4"	40.6(1.6)	19(0.75)	15.8(0.62)	16(0.63)	30(1.18)	12.7(0.5)	9.6(0.38)	9.8(0.39)	103(4.06)	46.4(1.83)	33(1.3)	51.5(2.03)	23(0.91)
CLQ1T-3/4"X3/4"X3/4"	40.6(1.6)	19(0.75)	15.8(0.62)	16(0.63)	40.6(1.6)	19(0.75)	15.8(0.62)	16(0.63)	113(4.45)	52.3(2.06)	33(1.3)	56.5(2.22)	33(1.3)
CLQ1T-1"X1/2"X1"	49(1.93)	25.4(1)	22.2(0.87)	22.3(0.88)	30(1.18)	12.7(0.5)	9.6(0.38)	9.8(0.39)	113(4.45)	51.6(2.03)	37(1.46)	56.5(2.22)	23(0.91)
CLQ1T-1"X3/4"X1"	49(1.93)	25.4(1)	22.2(0.87)	22.3(0.88)	40.6(1.6)	19(0.75)	15.8(0.62)	16(0.63)	122(4.8)	57.5(2.26)	37(1.46)	61(2.4)	33(1.3)
CLQ1T-1"X1"X1"	49(1.93)	25.4(1)	22.2(0.87)	22.3(0.88)	49(1.93)	25.4(1)	22.2(0.87)	22.3(0.88)	133(5.24)	61.6(2.43)	37(1.46)	66.5(2.62)	37(1.46)

产品参数

规格 Size	Dimensions 外形尺寸 mm (inch)									
	D	d	L	d1	d2	L1	L2	D1	E	
CLQ1ET-1/4"XT1/2"	17(0.67)	6.4(0.25)	32(1.26)	3.9(0.15)	9.5(0.37)	36(1.42)	25(0.98)	12.7(0.5)	1.6(0.06)	
CLQ1ET-1/4"XT1/4"	17(0.67)	6.4(0.25)	29(1.14)	3.9(0.15)	4.1(0.16)	26(1.02)	17(0.67)	6.4(0.25)	1.1(0.04)	
CLQ1ET-3/8"XT3/8"	23(0.91)	9.7(0.38)	36(1.42)	6.5(0.26)	6.3(0.25)	36(1.42)	21(0.83)	9.5(0.37)	1.6(0.06)	
CLQ1ET-1/2"XT1/2"	30(1.18)	12.7(0.5)	42(1.65)	9.6(0.38)	9.5(0.37)	43(1.69)	25(0.98)	12.7(0.5)	1.6(0.06)	
CLQ1ET-3/4"XT1"	40.6(1.6)	19(0.75)	60(2.36)	15.8(0.62)	22.2(0.87)	61(2.4)	38(1.5)	25.4(1)	1.6(0.06)	
CLQ1ET-3/4"XT3/4"	40.6(1.6)	19(0.75)	56(2.2)	15.8(0.62)	15.8(0.62)	54(2.13)	31(1.22)	19(0.75)	1.6(0.06)	
CLQ1ET-1"XT1"	49(1.93)	25.4(1)	66.5(2.62)	22.2(0.87)	22.2(0.87)	66.5(2.62)	38(1.5)	25.4(1)	1.6(0.06)	

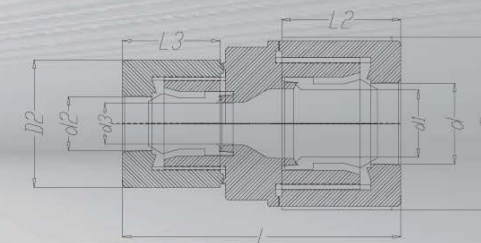
PFA 90 DEGREE ELBOW SLEEVE-INSERT TYPE

PFA 入珠弯头



PFA CONNECTOR SLEEVE-INSERT TYPE

PFA 入珠直通



产品参数

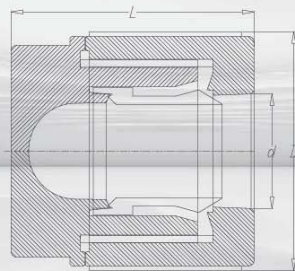
规格 Size	Dimensions 外形尺寸 mm (inch)					
	D	d	d1	d2	L	L1
CLQ1E-1/4"X1/4"	17(0.67)	6.4(0.25)	3.9(0.15)	3.2(0.13)	28.7(1.13)	17(0.67)
CLQ1E-3/8"X1/4"	23.0/17 (0.91/0.67)	9.7/6.4 (0.38/0.25)	6.5/3.9 (0.26/0.15)	6.7/3.2 (0.26/0.13)	32(1.26)	20.0/17 (0.79/0.67)
CLQ1E-3/8"X3/8"	22.98(0.9)	9.7(0.38)	6.5(0.26)	6.69(0.26)	35.4(1.39)	20(0.79)
CLQ1E-1/2"X3/8"	30.0/23.0 (1.18/0.91)	12.7/9.7 (0.5/0.38)	9.62/6.5 (0.38/0.26)	9.79/6.7 (0.39/0.26)	38.8(1.53)	23.0/20.0 (0.91/0.79)
CLQ1E-1/2"X1/2"	30.0(1.18)	12.7(0.5)	9.62(0.38)	9.79(0.39)	41.8(1.65)	23(0.91)
CLQ1E-3/4"X1/2"	40.6/30.0 (1.6/1.18)	19/12.7 (0.75/0.5)	15.8/9.62 (0.62/0.38)	15.95/9.79 (0.63/0.39)	45(1.77)	33/23 (1.3/0.91)
CLQ1E-3/4"X3/4"	40.6(1.6)	19(0.75)	15.8(0.62)	15.95(0.63)	52.31(2.06)	33(1.3)
CLQ1E-1"X1"	49(1.93)	25.4(1)	22.2(0.87)	22.29(0.88)	61.57(2.42)	37(1.46)

产品参数

规格 Size	Dimensions 外形尺寸 mm (inch)								
	D	d	d1	D2	d2	d3	L	L2	L3
CLQ1U-1/4"X1/4"	17(0.67)	6.4(0.25)	3.9(0.15)	17(0.67)	6.4(0.25)	3.9(0.15)	44.8(1.76)	17(0.67)	17(0.67)
CLQ1U-3/8"X1/4"	23(0.91)	9.7(0.38)	6.5(0.26)	17(0.67)	6.4(0.25)	3.9(0.15)	50(1.97)	20(0.79)	17(0.67)
CLQ1U-3/8"X3/8"	23(0.91)	9.7(0.38)	6.5(0.26)	23(0.91)	9.7(0.38)	6.5(0.26)	52.8(2.08)	20(0.79)	20(0.79)
CLQ1U-1/2"X3/8"	30(1.18)	12.7(0.5)	9.6(0.38)	23(0.91)	9.7(0.38)	6.5(0.26)	54.2(2.13)	23(0.91)	20(0.79)
CLQ1U-1/2"X1/2"	30(1.18)	12.7(0.5)	9.6(0.38)	30(1.18)	12.7(0.5)	9.6(0.38)	57.6(2.27)	23(0.91)	23(0.91)
CLQ1U-3/4"X3/8"	40.6(1.6)	19(0.75)	15.8(0.62)	23(0.91)	9.7(0.38)	6.5(0.26)	61.5(2.42)	33(1.3)	20(0.79)
CLQ1U-3/4"X1/2"	40.6(1.6)	19(0.75)	15.8(0.62)	30(1.18)	12.7(0.5)	9.6(0.38)	64.5(2.54)	33(1.3)	23(0.91)
CLQ1U-3/4"X3/4"	40.6(1.6)	19(0.75)	15.8(0.62)	40.6(1.6)	19(0.75)	15.8(0.62)	72.6(2.86)	33(1.3)	28(1.1)
CLQ1U-1"X3/8"	49(1.93)	25.4(1)	22.2(0.87)	23(0.91)	9.7(0.38)	6.5(0.26)	66(2.6)	37(1.46)	20(0.79)
CLQ1U-1"X1/2"	49(1.93)	25.4(1)	22.2(0.87)	30(1.18)	12.7(0.5)	9.6(0.38)	69(2.72)	37(1.46)	23(0.91)
CLQ1U-1"X3/4"	49(1.93)	25.4(1)	22.2(0.87)	40.6(1.6)	19(0.75)	15.8(0.62)	74.1(2.92)	37(1.46)	28(1.1)
CLQ1U-1"X1"	49(1.93)	25.4(1)	22.2(0.87)	49(1.93)	25.4(1)	22.2(0.87)	80.7(3.18)	37(1.46)	32(1.26)

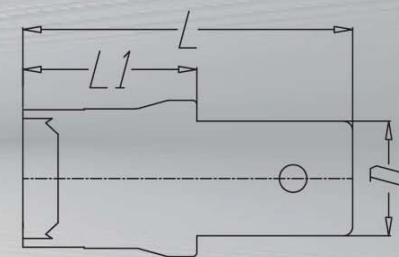
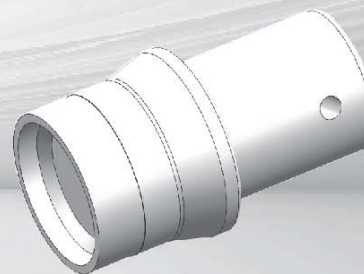
PFA CAP SLEEVE-INSERT TYPE

PFA 入珠管堵



PTEF PLUG

PTFE 堵头



产品参数

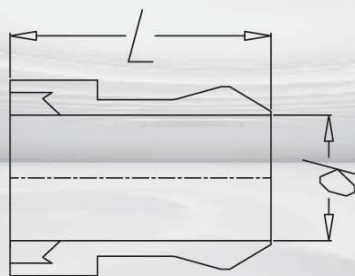
规格 Size	Dimensions 外形尺寸 mm (inch)		
	D	d	L
CLQ1CP-1/4"	17(0.67)	6.4(0.25)	25.4(1)
CLQ1CP-3/8"	23(0.91)	9.5(0.37)	37.3(1.47)
CLQ1CP-1/2"	30(1.18)	12.7(0.5)	34.8(1.37)
CLQ1CP-3/4"	40.6(1.6)	19(0.75)	41.3(1.63)
CLQ1CP-1"	49(1.93)	25.4(1)	45.4(1.79)

产品参数

规格 Size	Dimensions 外形尺寸 mm (inch)		
	D	L	L1
CLQP-1/4"	6.4(0.25)	23.5(0.93)	14(0.55)
CLQP-3/8"	9.5(0.37)	31(1.22)	16(0.63)
CLQP-1/2"	12.7(0.5)	36(1.42)	19(0.75)
CLQP-3/4"	19(0.75)	42(1.65)	20(0.79)
CLQP-1"	25.4(1)	45.6(1.8)	22.7(0.89)

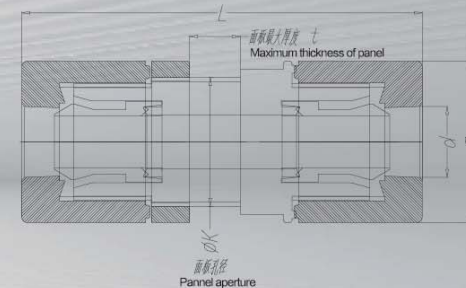
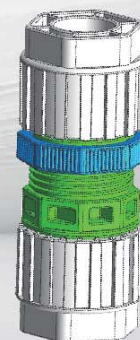
PFA INSERT SLEEVE

PFA 入珠



PFA PANEL MOUNT CONNECTOR SLEEVE-INSERT TYPE

PFA 入珠面板安装接头



产品参数

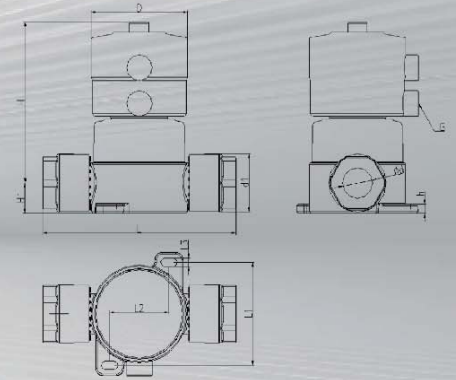
规格 Size	Dimensions 外形尺寸 mm (inch)	
	d	L
CPS-1/4"	3.9(0.15)	14.8(0.58)
CPS-3/8"	6.5(0.26)	16(0.63)
CPS-1/2"	9.6(0.38)	20(0.79)
CPS-3/4"	15.8(0.62)	22.7(0.89)
CPS-1"	22.2(0.87)	26.2(1.03)

产品参数

规格 Size	Dimensions 外形尺寸 mm (inch)				
	D	d	L	t	k
CLQ3P-1/4"	17(0.67)	6.35(0.25)	58(2.28)	8(0.31)	13.5(0.53)
CLQ3P-3/8"	23(0.91)	9.5(0.37)	66(2.6)	8(0.31)	20.5(0.81)
CLQ3P-1/2"	30(1.18)	12.7(0.5)	75(2.95)	8(0.31)	24.5(0.96)
CLQ3P-3/4"	40.6(1.6)	19(0.75)	98(3.86)	9(0.35)	35(1.38)
CLQ3P-1"	49(1.93)	25.4(1)	116(4.57)	10(0.39)	44(1.73)

PFA PNEUMATIC DIAPHRAGM VALVE SLEEVE-INSERT TYPE

PFA 入珠气动隔膜阀



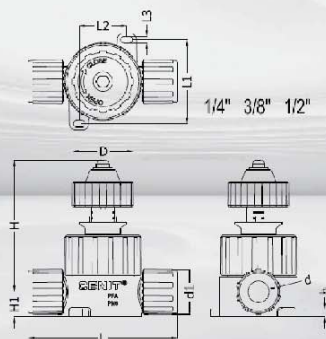
产品参数

规格 Size	Dimensions 外形尺寸 mm (inch)										
	D	d	d1	H	H1	h	L	L1	L2	L3	G
1/4"	41(1.61)	6.4(0.25)	17(0.67)	88(3.46)	9.6(0.38)	5(0.2)	85(3.35)	51.5(2.03)	22(0.87)	5.8(0.23)	1/8"
3/8"	41(1.61)	9.53(0.38)	23.5(0.93)	91(3.58)	12.6(0.5)	5(0.2)	89(3.5)	51.5(2.03)	22(0.87)	5.8(0.23)	1/8"
1/2"	55(2.17)	12.7(0.5)	30(1.18)	125(4.92)	16.5(0.65)	5(0.2)	100(3.94)	57(2.24)	32(1.26)	5.8(0.23)	1/8"
3/4"	69(2.72)	19(0.75)	40.6(1.6)	112(4.41)	21(0.83)	6(0.24)	137(5.39)	72(2.83)	42(1.65)	5.8(0.23)	1/8"
1"	69(2.72)	25.4(1)	49(1.93)	115(4.53)	25(0.98)	6(0.24)	160(6.3)	86(3.39)	52(2.05)	5.8(0.23)	1/8"

阀门 VALVE

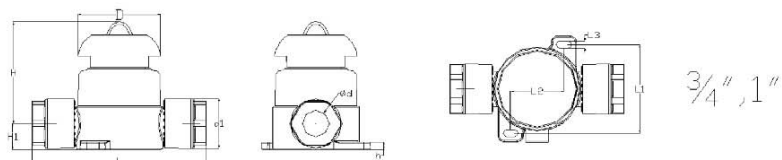
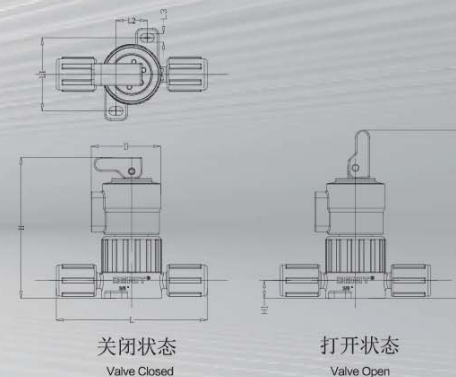
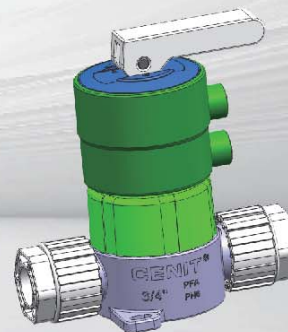
PFA HAND-WHEEL MANUAL DIAPHRAGM VALVE SLEEVE-INSERT TYPE

PFA 入珠手轮式手动隔膜阀



PFA TOGGLE MANUAL DIAPHRAGM VALVE SLEEVE-INSERT TYPE

PFA 入珠肘杆式手动隔膜阀



产品参数

规格 Size	Dimensions 外形尺寸 mm (inch)										
	D	d	d1	H	H1	h	L	L1	L2	L3	
1/4"	41(1.61)	6.4(0.25)	17(0.67)	82(3.23)	9.6(0.38)	5(0.2)	85(3.35)	51.5(2.03)	22(0.87)	5.8(0.23)	
3/8"	41(1.61)	9.53(0.38)	23.5(0.93)	82(3.23)	12.6(0.5)	5(0.2)	89(3.5)	51.5(2.03)	22(0.87)	5.8(0.23)	
1/2"	41(1.61)	12.7(0.5)	30(1.18)	88(3.46)	16.5(0.65)	5(0.2)	100(3.94)	57(2.24)	32(1.26)	5.8(0.23)	
3/4"	65(2.56)	19(0.75)	40.6(1.6)	90(3.54)	21(0.83)	6(0.24)	137(5.39)	72(2.83)	42(1.65)	5.8(0.23)	
1"	65(2.56)	25.4(1)	49(1.93)	93(3.66)	25(0.98)	6(0.24)	160(6.3)	86(3.39)	52(2.05)	5.8(0.23)	

产品参数

规格 Size	Dimensions 外形尺寸 mm (inch)										
	D	d	d1	H	H1	H2	h	L	L1	L2	L3
1/4"	49.0	6.40	17.0	97.0	9.6	117	5.0	85.0	51.5	22.0	6.2
3/8"	49.0	9.53	23.5	100.0	12.6	120	5.0	89.0	51.5	22.0	6.2
1/2"	64.0	12.70	30.0	115.0	16.5	146	5.0	100.0	57.0	32.0	5.4
3/4"	77.5	19.00	40.6	146	21.0	203.0	6.0	137.0	72.0	42.0	5.8
1"	78.0	25.40	49.0	152.0	25.0	206.0	6.0	160.0	86.0	52.0	5.8