

PPH & PVDF

管材 / 管件 / 阀门 PIPE / FITTING / VALVE



CONTENTS

目录

ABOUT US 01
关于我们

CERTIFICATIONS 03
资质证书

PRODUCT CATEGORY 05
产品类别

APPLICATION 06
行业应用



PIPE 09
管材

PPH 管材系列和规格尺寸
SERIES AND SIZE OF PPH PIPE 10

PIPE FITTING 11
管件

对焊 90° 弧形弯头
BUTT FUSION ELBOW 90° 12

对焊 45° 弯头
BUTT FUSION ELBOW 45° 13

对焊 90° 正三通
BUTT FUSION 90° TEE 14

对焊 管帽
BUTT FUSION CAP 14

对焊 变径
BUTT FUSION BUSHING 16

对焊 法兰适配器
BUTT FUSION FLANGE 17

支撑法兰, 钢衬 PP
PP-STEEL BACKING FLANGE 18

对焊 适配接头
BUTT FUSION ADAPTOR 19

对焊 适配缩节
BUTT FUSION CONNECTION ADAPTOR 20

对焊 活接
BUTT FUSION UNION 21

承插焊 90° 弯头
SOCKET FUSION ELBOW 90° 22

承插焊 45° 弯头
SOCKET FUSION ELBOW 45° 23

承插焊 90° 正三通
SOCKET FUSION 90° TEE 24

承插焊 管帽
SOCKET FUSION CAP 25

承插焊 变径
SOCKET FUSION BUSHING 26

承插焊 管箍
SOCKET FUSION COUPLING 27

承插焊 法兰适配器
SOCKET FUSION FLANGE 28

承插焊 适配缩节
SOCKET FUSION CONNECTION ADAPTOR 29

承插焊 活接
SOCKET FUSION UNION 30

VALVE 31
阀门

对焊 双由任球阀
BUTT FUSION TRUE UNION BALL VALVE 33

承插焊 双由任球阀
SOCKET FUSION TRUE UNION BALL VALVE 34

对焊 全塑气动双由任球阀
BUTT FUSION PLASTIC PNEUMATIC TRUE UNION BALL VALVE 35

承插焊 全塑气动双由任球阀
SOCKET FUSION PLASTIC PNEUMATIC TRUE UNION BALL VALVE 36

对焊 隔膜阀
BUTT FUSION DIAPHRAGM VALVE 37

承插焊 隔膜阀
SOCKET FUSION DIAPHRAGM VALVE 38

快接气动隔膜阀
QUICK OPERATED PNEUMATIC DIAPHRAGM VALVE 39

对焊 全塑气动隔膜阀
BUTT FUSION PLASTIC PNEUMATIC DIAPHRAGM VALVE 41

承插焊 全塑气动隔膜阀
SOCKET FUSION PLASTIC PNEUMATIC DIAPHRAGM VALVE 42



PIPE 45
管材

PVDF 管材系列和规格尺寸
SERIES AND SIZE OF PVDF PIPE 46

PIPE FITTING 47
管件

对焊 90° 弧形弯头
BUTT FUSION ELBOW 90° 48

对焊 45° 弯头
BUTT FUSION ELBOW 45° 49

对焊 90° 正三通
BUTT FUSION 90° TEE 50

对焊 管帽
BUTT FUSION CAP 51

对焊 变径
BUTT FUSION BUSHING 52

对焊 法兰适配器
BUTT FUSION FLANGE 53

支撑法兰, 钢衬 PP
PP-STEEL BACKING FLANGE 54

对焊 适配接头
BUTT FUSION ADAPTOR 55

对焊 适配缩节
BUTT FUSION CONNECTION ADAPTOR 56

对焊 活接
BUTT FUSION UNION 57

承插焊 90° 弯头
SOCKET FUSION ELBOW 90° 58

承插焊 45° 弯头
SOCKET FUSION ELBOW 45° 59

承插焊 90° 正三通
SOCKET FUSION 90° TEE 60

承插焊 管帽
SOCKET FUSION CAP 61

承插焊 变径
SOCKET FUSION BUSHING 62

承插焊 管箍
SOCKET FUSION COUPLING 63

承插焊 法兰适配器
SOCKET FUSION FLANGE 64

承插焊 适配缩节
SOCKET FUSION CONNECTION ADAPTOR 65

承插焊 活接
SOCKET FUSION UNION 66

VALVE 67
阀门

对焊 双由任球阀
BUTT FUSION TRUE UNION BALL VALVE 69

承插焊 双由任球阀
SOCKET FUSION TRUE UNION BALL VALVE 70

对焊 全塑气动双由任球阀
BUTT FUSION PLASTIC PNEUMATIC TRUE UNION BALL VALVE 71

承插焊 全塑气动双由任球阀
SOCKET FUSION PLASTIC PNEUMATIC TRUE UNION BALL VALVE 72

对焊 隔膜阀
BUTT FUSION DIAPHRAGM VALVE 73

承插焊 隔膜阀
SOCKET FUSION DIAPHRAGM VALVE 74

快接气动隔膜阀
QUICK OPERATED PNEUMATIC DIAPHRAGM VALVE 75

对焊 全塑气动隔膜阀
BUTT FUSION PLASTIC PNEUMATIC DIAPHRAGM VALVE 76

承插焊 全塑气动隔膜阀
SOCKET FUSION PLASTIC PNEUMATIC DIAPHRAGM VALVE 77

ABOUT US

关于我们

PPH 管材 / 管件 / 阀门

PPH PIPE/FITTING/VALVE

EXPERT IN PIPING SYSTEM

管路系统的专家级工厂

重信求实 华生企业的灵魂
开拓创新 永恒发展的动力

以质取胜、以质取信，为顾客提供满意的产品和服务。



▶ 公司简介

华生管道科技有限公司始建于1988年，坐落于江苏常州高新技术产业开发区，是一家集UPVC、CPVC、PE、PPH、PVDF等材质的工业、给水、环保水处理设备类塑料管道产品研发、制造于一体的管路系统专业生产企业。经过多年的探索与提升，目前华生已成为行业内的领先企业，是江苏省塑料管道系统工程技术中心依托单位，中国塑料加工工业协会塑料管道专业委员会成员单位，中国电子材料行业协会成员单位。中国氯碱工业协会成员单位，中国电子电路行业协会成员单位。

▶ 公司实力

公司占地面积20万平方米，拥有固定资产6亿元人民币。公司现有员工400多人，下设模具事业部、管路系统事业部、精密注塑事业部。原料混配系统6套，造粒生产线8条，管材挤出生产线30条，注塑机200多台，大型加工中心等机械加工设备80多台，年生产能力达60000吨。

▶ 资质 & 荣誉

目前公司已经通过ISO9001、ISO14001、OHSAS18001等体系的认证，以及美国卫生基金国际组织NSF认证。公司被认定为江苏省高新技术企业，“华生”商标荣获江苏省著名商标。拥有江苏省高新技术产品2项，授权专利30项，获得国家质量监督检验检疫总局颁发的《中华人民共和国特种设备制造许可证（压力管道元件）》和江苏省卫计委颁发的《涉水产品卫生行政许可批件》，并入选《全国水利系统优秀产品招标重点推荐目录》和《全国农村水利工程材料设备产品信息年报》。

CERTIFICATIONS

资质证书

客户至上，优质高效，绿色环保，顾客满意。



PRODUCT CATEGORY

产品类别

▶ 给水、工业、环保水处理系列管材

DIN:20mm-800mm
S4/S5/S6.3/S8/S10/S12.5/S16/S20
ASTM:1/2"-24"
SCH40/SCH80



管材 / PIPE

▶ 给水、工业、环保水处理系列管件

(PN10、PN12.5、PN16)
柔性管件 (带胶圈管件) 63mm~355mm
胶粘式管件 (PN10、PN12.5、PN16) 20mm~500mm
SCH80 1/2"-16"



管件 / PIPE FITTING

▶ 阀门类

球阀 (插口、丝口)
DIN:20mm~110mm; ASTM:1/2"~4"
双由令球阀 (手柄式、气动式、电动式)
DIN:20mm~110mm; ASTM:1/2"~4"; JIS:16A~100A
蝶阀 (手柄式、齿轮式、气动式、电动式)
DIN:63mm~400mm; ASTM:2"~16"; JIS:50A~318A
隔膜阀 (法兰式、插口式、由令式)
DIN:20mm~160mm; ASTM:1/2"~6"; JIS:16A~50A
止回阀 (单由令式、双由令式、摆动式、旋启式)
DIN:20mm~160mm; ASTM:1/2"~8"; JIS:16A~100A
底阀 (由令式、摆动式)
DIN:20mm~160mm



阀门 / VALVE

APPLICATION

行业应用

管路系统的专家级工厂 EXPERT IN PIPING SYSTEM



- 化工行业 · 建筑行业 · 水处理行业 · 医疗制药行业
- 电子行业 · 冶金行业 · 食品加工行业 · 农业灌溉行业



进口原料 Beta-[B]- 成核型 PP-H，均聚型聚丙烯

化工厂管路系统的正确材料

Beta-[β]-PP—H100 是均聚型聚丙烯，具有非常均一、致密的结构和出众的抗冲击强度。该材料的高结晶度确保了极好的耐化学品的特性。

二氧化钛色素的使用进一步提高了此特性。

Beta-[β]-PP—H100 关于输送介质的合适性，换句话说就是，Beta-[β]-PP—H100 的耐化学品性能，可以查阅和参考《ISOTR10358 塑料管道和管件——综合耐化性分类表》

根据 ISO TR9020 进行的长期测试保证了长期变强度，并且被定为 MRS10（最小所需强度）。

在选择 Beta-[β]-PP—H100 上，华生管道始终坚持原材料进口的原则：提供给工业系统最合适的材料。

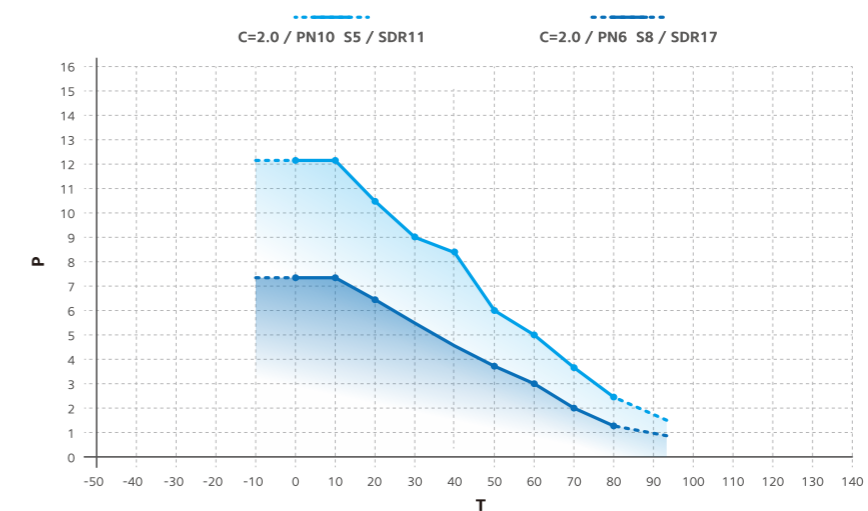
我们给工厂建设人员提供了一套完整的塑料管路系统产品：管子、管件（承插管件和对焊管件）、手动阀门和自动阀门，所有这些产品都是同一种材料，与之配套的还有先进的连接技术和专业的培训。

硬度，弹性模量

与无规型聚丙烯 PP-R80 相比，PP-H100 具有较高的弹性模量并导致较大的短期强度，另外由于硬度好安装就容易（只需要少量的管夹）。

另外一个作用是对水锤效应具有更好的表现性能。

Beta-(B)-PP-H100 管子、管件的应用范围
(25 年使用年限，设计系数 C=2.0)



标识

华生管道 Beta-[B]-PP—H100

管材，管件的标识为：CENIT® PP-H

管道外径（例如 315）

标注公称压力：

无标志 =PN10 S5/PN10=PN10 S8/PN6=PN6 SDR11=PN10 SDR17,6=PN6

CENIT

PPH

管材 / 管件 / 阀门

PPH PIPE/FITTING/VALVE

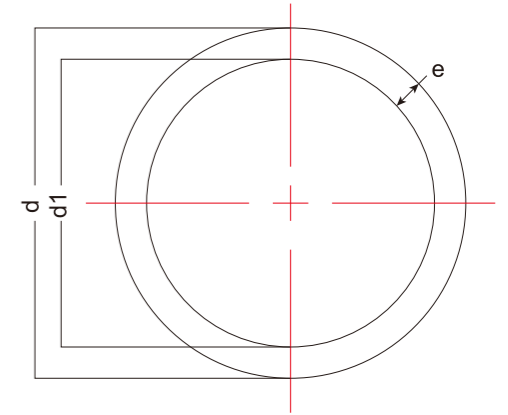
SERIES AND SIZE OF PPH PIPE

PPH 管材系列和规格尺寸

等级: S5/SDR11(PN10) Class: S5/SDR11(PN10) / 尺寸: DIN8077 Size: DIN8077
 颜色: RAL7032 卵石灰 Color: Pebble grey / 长度: 5米 Length: 5 meters

产品参数

d (mm)	weight (kg)	d1 (mm)	e (mm)	closest (inch)
20	0.127	15.4	2.3	1/2
25	0.164	20.4	2.3	3/4
32	0.261	26.2	2.9	1
40	0.412	32.6	3.7	1 1/4
50	6.38	40.8	4.6	1 1/2
63	1.01	51.4	5.8	2
75	1.41	61.4	6.8	2 1/2
90	2.03	73.6	8.2	3
110	3.01	90	10	4
125	3.91	102.2	11.4	4 1/2
140	4.87	114.6	12.7	5
160	6.38	130.8	14.6	6
180	8.07	147.2	16.4	7
200	9.95	163.6	18.2	8
225	12.6	184	20.5	9
250	15.5	204.6	22.7	10
280	19.4	229.2	25.4	11
315	24.6	257.8	28.6	12
355	31.2	290.6	32.2	14
400	39.7	327.4	36.3	16



等级: S8/SDR17(PN6) Class: S8/SDR17(PN6) / 尺寸: DIN8077 Size: DIN8077
 颜色: RAL7032 卵石灰 Color: Pebble grey / 长度: 5米 Length: 5 meters

产品参数

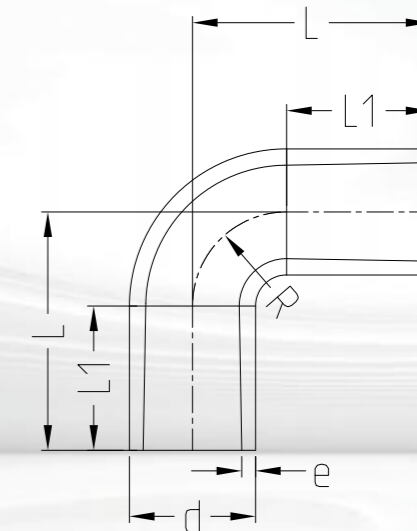
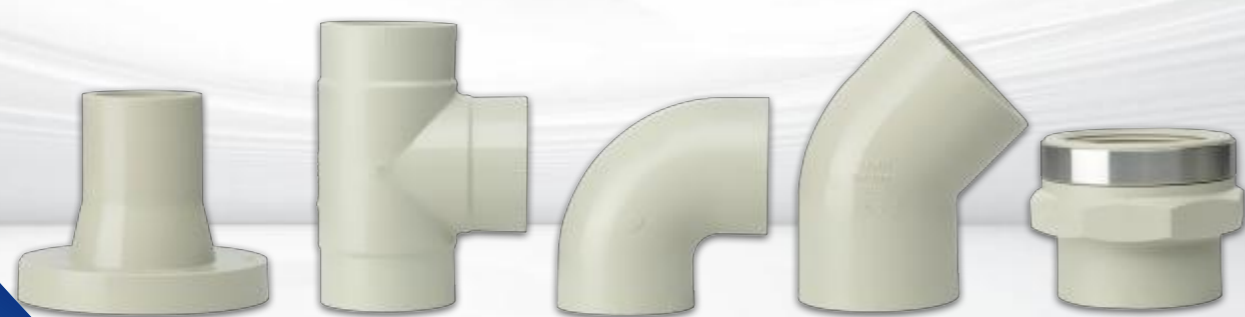
d (mm)	weight (kg)	d1 (mm)	e (mm)	closest (inch)
40	0.273	35.4	2.3	1 1/4
50	0.422	44.2	2.9	1 1/2
63	0.659	55.8	3.6	2
75	0.935	66.4	4.3	2 1/2
90	1.33	79.8	5.1	3
110	1.99	97.4	6.3	4
125	2.55	110.8	7.1	4 1/2
140	3.2	124	8	5
160	4.17	141.8	9.1	6
180	5.25	159.6	10.2	7
200	6.5	177.2	11.4	8
225	8.19	199.4	12.8	9
250	10.1	221.6	14.2	10
280	12.6	248.2	15.9	11
315	16	279.2	17.9	12
355	20.3	314.8	20.1	14
400	25.7	354.6	22.7	16

管材 PIPE

DIN8077/8078 GB/T 18742.3-2002

BUTT FUSION ELBOW 90°

对焊 90°弧形弯头



等级: S5/SDR11(PN10) Class: S5/SDR11(PN10)

产品参数

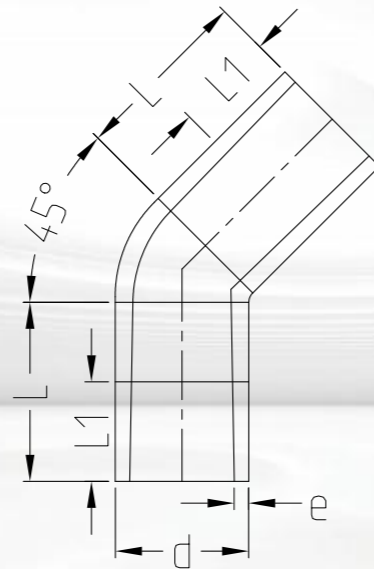
d (mm)	weight (kg)	L (mm)	L1 (mm)	R (mm)	e (mm)
20	0.008	38	23	15	2.2
25	0.013	42	23	19	2.5
32	0.022	46	21	24	3.2
40	0.04	51	21	30	4
50	0.067	58	21	37	4.9
63	0.117	66	21	45	6.1
75	0.232	100	25	75	7.2
90	0.337	115	25	90	8.6
110	0.701	135	25	110	10.4
125	0.818	125	28	116	11.4
140	1.148	140	33	125	12.7
160	1.699	160	33	145	14.6
200	3.264	200	33	185	18.2
225	4.535	220	33	205	20.5
250	6.351	256	48	232	22.7
280	9.398	286	48	262	25.4
315	12.959	321	48	297	28.6
355	19.4	385	38	355	32.2
400	28.453	438	41	400	36.3

管件 PIPE FITTING

DIN8077/8078 GB/T 18742.3-2002

BUTT FUSION ELBOW 45°

对焊 45°弯头



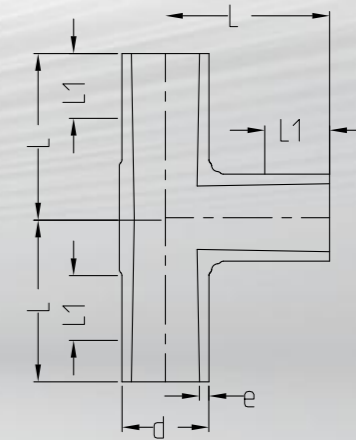
等级: S5/SDR11(PN10) Class: S5/SDR11(PN10)

产品参数

d (mm)	weight (kg)	L (mm)	L1 (mm)	e (mm)
20	0.007	32	24	2.2
25	0.011	34	25	2.5
32	0.019	36	25	3.2
40	0.033	39	25	4
50	0.095	42	29	4.9
63	0.145	47	29	6.1
75	0.241	49	29	7.2
90	0.429	57	34	8.6
110	0.57	70	43	10.4
125	0.57	79	48	11.4
140	0.854	88	55	12.7
160	1.256	100	60	14.6
200	2.448	124	75	18.2
225	3.495	140	85	20.5
250	7.89	225	133	22.7
280	10.17	235	143	25.4
315	11.69	255	154	28.6

BUTT FUSION 90° TEE

对焊 90°正三通



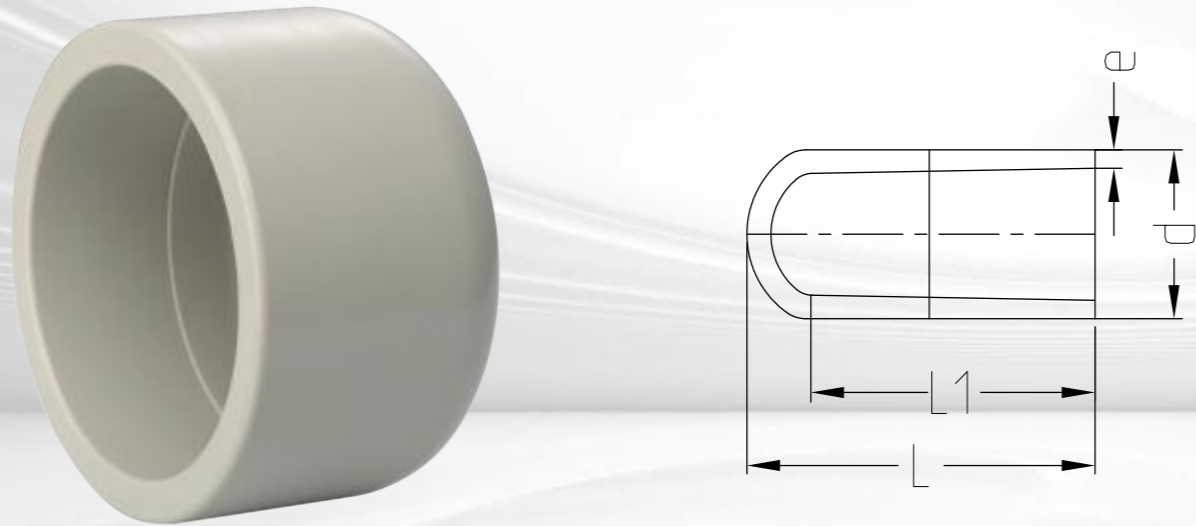
等级: S5/SDR11(PN10) Class: S5/SDR11(PN10)

产品参数

d (mm)	weight (kg)	L (mm)	L1 (mm)	e (mm)
20	0.012	38	25	2.2
25	0.02	42	25	2.5
32	0.034	46	25	3.2
40	0.059	51	25	4
50	0.105	58	25	4.9
63	0.184	66	24	6.1
75	0.298	75	26	7.2
90	0.51	90	31	8.6
110	0.933	110	37	10.4
125	1.4	125	45	11.4
140	1.98	140	50	12.7
160	2.9	160	55	14.6
200	5.57	200	65	18.2
225	7.82	220	70	20.5
250	12.48	256	92	22.7
280	17.25	286	110	25.4
315	24.06	321	118	28.6
355	31.1	385	103	32.2
400	38	438	105	36.3

BUTT FUSION CAP

对焊 管帽



等级: S5/SDR11(PN10) Class: S5/SDR11(PN10)

产品参数

d (mm)	weight (kg)	L (mm)	L1 (mm)	e (mm)
20	0.005	42	34.2	2.2
25	0.005	50	39.3	2.5
32	0.013	55	41.7	3.2
40	0.018	65	48.2	4
50	0.043	70	49.1	4.9
63	0.08	80	56.7	6.1
75	0.126	90	59.3	7.2
90	0.107	105	65.8	8.6
110	0.384	125	79.4	10.4
125	0.237	50	25.0	11.4
140	0.35	60	30.0	12.7
160	0.684	76	40.0	14.6
200	1.089	100	50.0	18.2
225	1.531	103	60.0	20.5
250	1.9	60	/	22.7
280	2.6	65	/	25.4
315	3.5	70	/	28.6
355	5.1	80	/	32.2
400	7.2	85	/	36.3

BUTT FUSION BUSHING

对焊 变径



等级: S5/SDR11(PN10) Class: S5/SDR11(PN10)

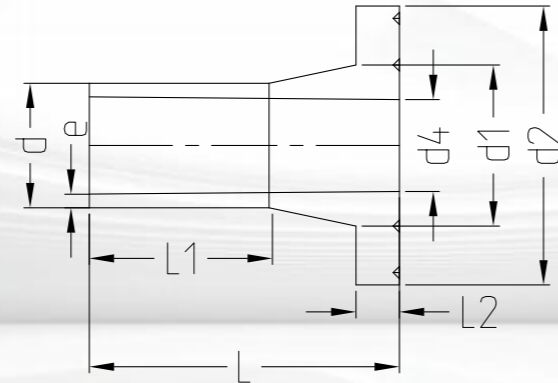
产品参数

d (mm)	d1 (mm)	weight (kg)	L (mm)	L1 (mm)	L2 (mm)	e (mm)	e1 (mm)
25	20	0.007	50	20	20	2.5	2
32	20	0.01	50	20	20	3.2	2.2
32	25	0.011	50	20	24	3.2	2.5
40	20	0.015	55	20	20	4	2.2
40	25	0.016	55	20	20	4	2.5
40	32	0.019	55	20	24	4	3.2
50	25	0.025	60	20	20	4.9	2.5
50	32	0.027	60	20	20	4.9	3.2
50	40	0.03	60	20	20	4.9	4
63	32	0.043	65	20	20	6.1	3.2
63	40	0.047	65	20	20	6.1	4
63	50	0.051	65	20	20	6.1	4.9
75	40	0.064	70	20	20	7.2	4
75	50	0.065	70	20	20	7.2	4.9
75	63	0.074	70	20	20	7.2	6.1
90	63	0.12	75	22	20	8.6	6.1
90	75	0.128	75	22	20	8.6	7.2
110	75	0.215	90	28	20	10.4	7.2
110	90	0.23	90	28	20	10.4	8.6
125	110	0.333	100	31	32	11.4	10

d (mm)	d1 (mm)	weight (kg)	L (mm)	L1 (mm)	L2 (mm)	e (mm)	e1 (mm)
140	110	0.423	110	33	29	12.7	10
140	125	0.462	110	34	30	12.7	11.4
160	110	0.586	120	39	27	14.6	10
160	140	0.647	120	40	35	14.6	12.7
200	160	1.149	145	50	40	18.2	14.6
225	110	1.485	160	55	35	20.5	10
225	160	1.563	160	55	40	20.5	14.6
225	200	1.723	160	55	50	20.5	18.2
250	160	1.483	194	60	55	22.7	14.6
250	225	2.592	182	60	55	22.7	20.5
280	225	1.854	105	30	20	25.4	20.5
280	250	1.311	70	30	18	25.4	22.7
315	225	2.857	130	30	20	28.6	20.5
315	250	3.5	100	30	20	28.6	22.7
315	280	3.54	100	30	18	28.6	25.4
355	250	5.49	245	90	60	32.3	22.7
355	280	5.46	245	90	70	32.2	25.4
355	315	3.7	245	90	80	32.3	28.6
400	315	5.3	260	95	80	36.6	28.6
400	355	4.8	260	95	90	36.3	32.2

BUTT FUSION FLANGE

对焊 法兰适配器



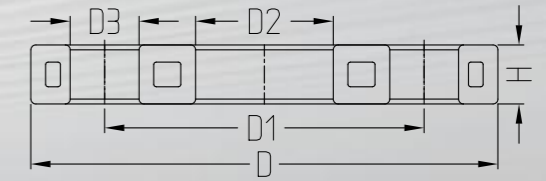
等级: S5/SDR11(PN10), 平面 / 细齿面组合 Class: Flat/Serrated surface combination

产品参数

d (mm)	DN (mm)	weight (kg)	d1 (mm)	d2 (mm)	d4 (mm)	L (mm)	L1 (mm)	L2 (mm)	e (mm)
20	15	0.015	26	45	14.8	50	29	7	2.2
25	20	0.028	32	58	19.3	52	27	9	2.5
32	25	0.042	40	68	24.8	54	28	10	3.2
40	32	0.064	50	80	37.4	64	30	11	4
50	40	0.088	61	90	43.4	67	30	12	4.9
63	50	0.144	76	105	54.5	74	30	14	6.1
75	65	0.233	90	125	70.6	80	30	16	7.2
90	80	0.316	108	140	82.6	87	35	17	8.6
110	100	0.422	131	160	105.6	102	41	18	10.4
125	125	0.487	165	190	102	82	35	25	11.4
140	125	0.8	165	190	114	89	39	25	12.7
160	150	0.92	188	215	131	92	45	25	14.6
200	200	1.67	248	270	163	100	30	32	18.2
225	200	1.665	248	270	184	100	35	32	20.5
250	250	2.63	291	320	204	100	25	35	22.7
280	250	2.52	391	320	229	100	35	35	25.4
315	300	3.247	335	370	257	100	25	35	28.6
355	350	7.57	373	430	290	180	40	40	32.2
400	400	10.2	427	482	327	187	46	46	36.3

PP-STEEL BACKING FLANGE

支撑法兰, 钢衬 PP



等级: 公制 PN16 CLASS: Metric PN16

材质: 钢衬 PP (30% 玻璃纤维增强) MATERIAL: PP with steel insert(30% increase of the glass-fibre reinforcement)

连接尺寸: IS7005, EN1092, BS4504, DIN2501 Connecting dimensions: IS7005, EN1092, BS4504, DIN2501

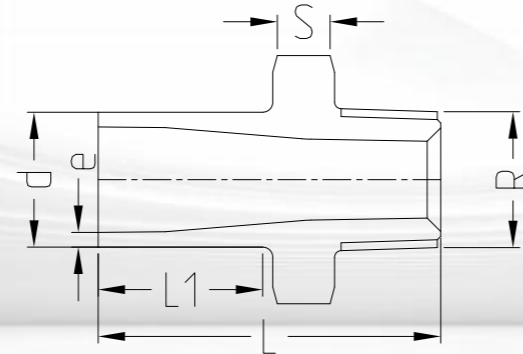
AL: 螺柱孔数 AL: number of holes / SC: 使用螺栓规格 SC: Bolt Specification

产品参数

d (mm)	DN (mm)	PN (bar)	weight (kg)	D (mm)	D1 (mm)	D2 (mm)	D3 (mm)	H (mm)	AL	SC
20	15	16	0.216	95	65	28	14	12	4	M12
25	20	16	0.276	105	75	34	14	12	4	M12
32	25	16	0.429	115	85	42	14	16	4	M12
40	32	16	0.67	140	100	51	18	16	4	M16
50	40	16	0.86	150	110	62	18	18	4	M16
63	50	16	0.93	165	125	78	18	18	4	M16
75	65	16	1.34	185	145	92	18	18	4	M16
90	80	16	1.4	200	160	108	18	20	8	M16
110	100	16	1.58	220	180	128	18	20	8	M16
125	125	16	2.318	250	210	167	18	20	8	M16
140	125	16	2.318	250	210	167	18	24	8	M16
160	150	16	3.491	285	240	190	22	24	8	M20
200	200	10	5.6	340	295	250	22	27	8	M20
225	200	10	5.6	340	295	250	22	27	8	M20
250	250	10	6.6	395	350	294	22	30	12	M20
280	250	10	6.6	395	350	294	22	30	12	M20
315	300	10	7.9	445	400	338	22	34	12	M20
355	350	10	14.6	515	460	376	23	40	16	M20
400	400	10	20	574	515	430	26	40	16	M24

BUTT FUSION ADAPTOR

对焊 适配接头



等级: S5/SDR11(PN10) Class: S5/SDR11 (PN10)

一端为 SDR11 对焊端, 一端为 R 外螺纹

With butt fusion spigot SDR11, the other is R type male thread

请勿使用对 PP 有害的螺纹密封胶

Do not use thread sealing pastes that are harmful to PP

安装时避免空存应力, 避免温度大范围循环变化

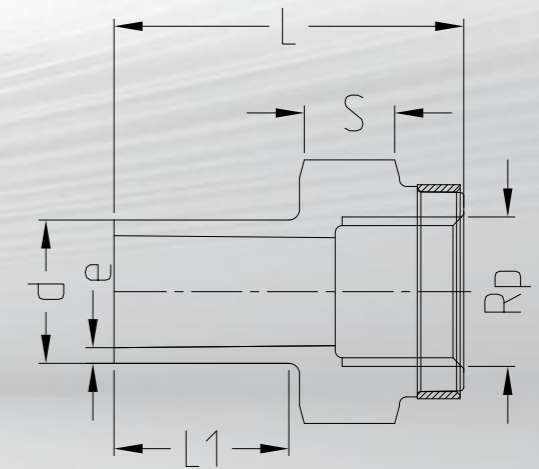
Install with low mechanical stress and avoid large cyclic temperature changes

产品参数

d (mm)	weight (kg)	L (mm)	L1 (mm)	S (mm)	e (mm)	Rp (inch)
20	0.013	51	24.5	32	2.2	1/2
25	0.014	52	24	36	2.5	3/4
32	0.027	55	23	46	3.2	1
40	0.041	58	23	55	4	1 1/4
50	0.062	60	23.5	65	4.9	1 1/2
63	0.096	67	25	80	6.1	2

BUTT FUSION CONNECTION ADAPTOR

对焊 适配缩节



等级: S5/SDR11 (PN10) Class: S5/SDR11 (PN10)

一端为 SDR11 对焊端, 一端为 Rp 内螺纹, 带增强圈

With butt fusion spigot SDR11 and the other end is female thread Rp, reinforced

不锈钢增强圈 (A2)

Reinforcing ring stainless (A2)

可连接塑料或金属螺纹

Connection to plastic or metal threads

请勿使用对 PP 有害的螺纹密封胶

Do not use thread sealing pastes that are harmful to PP

安装时避免空存应力, 避免温度大范围循环变化

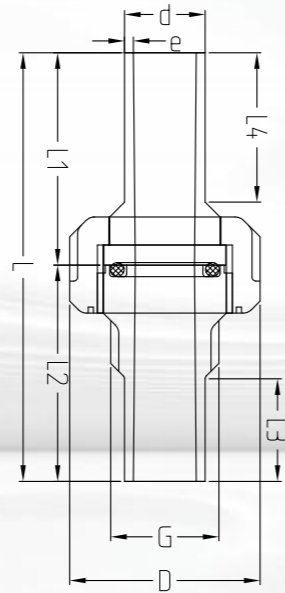
Install with low mechanical stress and avoid large cyclic temperature changes

产品参数

d (mm)	weight (kg)	L (mm)	L1 (mm)	S (mm)	e (mm)	Rp (inch)
20	0.017	49	24.5	32	2.2	1/2
25	0.022	51	24	36	2.48	3/4
32	0.038	55	23	46	3.2	1
40	0.066	57	23	55	4.27	1 1/4
50	0.09	60	23.5	65	5.21	1 1/2
63	0.123	62	25	80	6.36	2

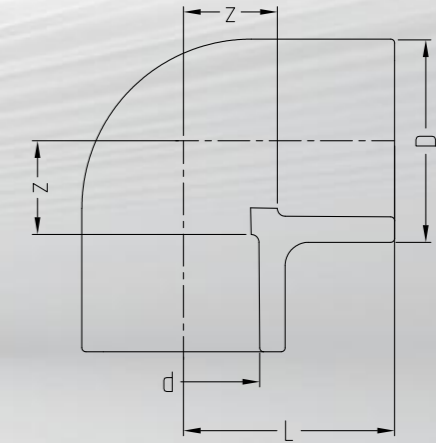
BUTT FUSION UNION

对焊 活接



SOCKET FUSION ELBOW 90°

承插焊 90°弯头



等级: S5/SDR11(PN10) Class: S5/SDR11(PN10) / 垫片: EPDM/FPM O型圈 Gasket: EPDM/FPM O-ring

产品参数

d (mm)	weight (kg)	D (mm)	L (mm)	L1 (mm)	L2 (mm)	L3 (mm)	L4 (mm)	G (inch)	e (mm)
20	0.47	47.5	107	53	54	25	37	1	2.2
25	0.72	58	112	56	56	25	26	1 1/4	2.5
32	0.1	65	120	60	60	25	42	1 1/2	3.2
40	0.19	77	126	63	63	26	42	2	4
50	0.332	84	131	65.5	65.5	26	45	2 1/4	4.9
63	0.52	105	137	68	69	27	45	2 1/2	6.1

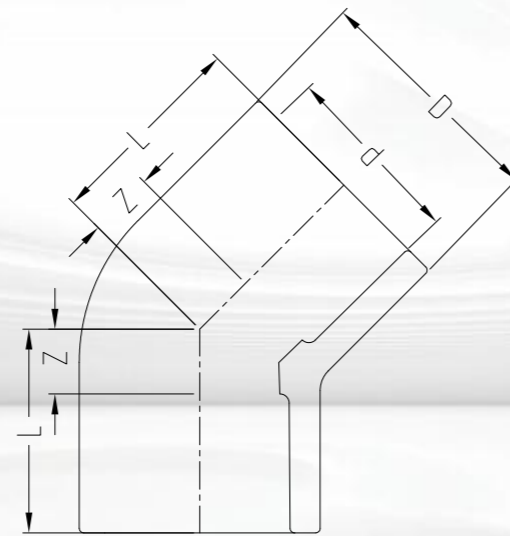
等级: S5/SDR11(PN10) Class: S5/SDR11(PN10)

产品参数

d (mm)	D (mm)	L (mm)	z (mm)	weight (kg)
20	26	27	9	0.02
25	32	32	11	0.029
32	40	37	15	0.044
40	51	43	19	0.074
50	64	51	24	0.128
63	81	62	30	0.23
75	93	76	45	0.301
90	110	88	53	0.477
110	134	106	65	0.869

SOCKET FUSION ELBOW 45°

承插焊 45°弯头



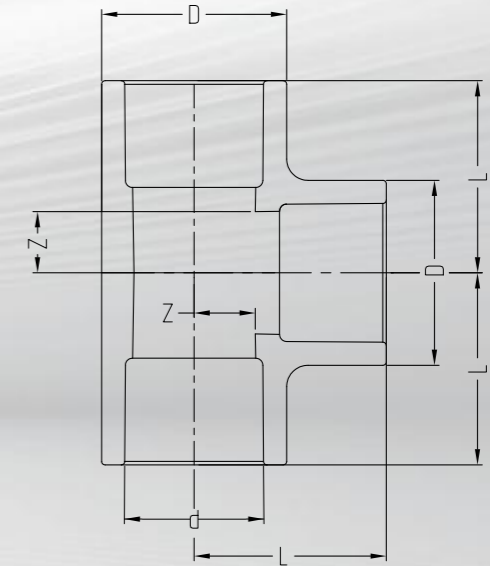
等级: S5/SDR11(PN10) Class: S5/SDR11(PN10)

产品参数

d (mm)	D (mm)	L (mm)	z (mm)	weight (kg)
20	26	22	7	0.016
25	32	24	7	0.024
32	40	29	10	0.036
40	51	33	12	0.059
50	64	38	14	0.084
63	81	45	17	0.185
75	93	51	20	0.219
90	110	58	23	0.336
110	134	68	27	0.657

SOCKET FUSION 90° TEE

承插焊 90°正三通



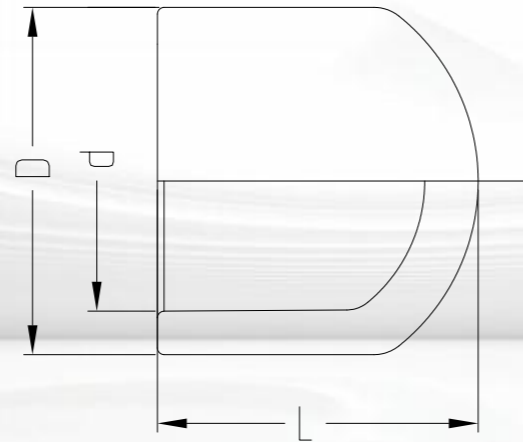
等级: S5/SDR11(PN10) Class: S5/SDR11(PN10)

产品参数

d (mm)	D (mm)	L (mm)	z (mm)	weight (kg)
20	26	27	9	0.027
25	32	32	11	0.038
32	40	37	15	0.058
40	51	43	19	0.094
50	64	51	24	0.158
63	81	62	30	0.288
75	93	76	45	0.39
90	110	88	53	0.727
110	134	106	65	1.062

SOCKET FUSION CAP

承插焊 管帽



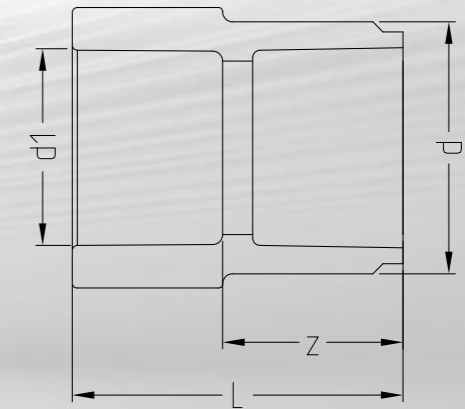
等级: S5/SDR11(PN10) Class: S5/SDR11(PN10)

产品参数

d (mm)	D (mm)	L (mm)	weight (kg)
20	26	24	0.01
25	32	27	0.014
32	40	33	0.022
40	51	38	0.024
50	64	44	0.05
63	81	51	0.079
75	93	65	0.149
90	110	77	0.277
110	134	93	0.411

SOCKET FUSION BUSHING

承插焊 变径



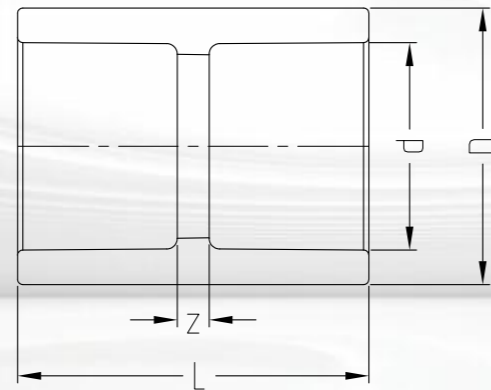
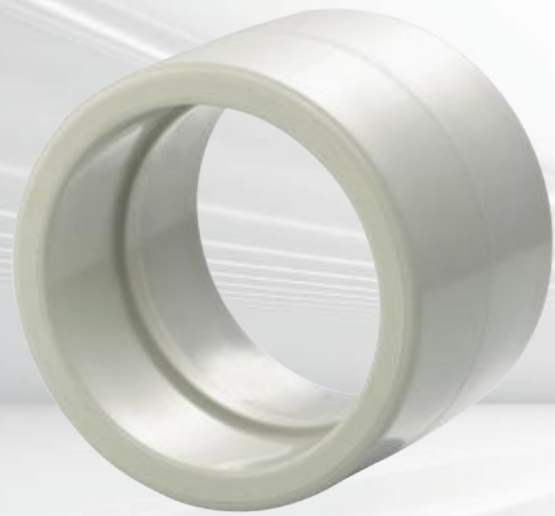
等级: S5/SDR11(PN10) Class: S5/SDR11(PN10)

产品参数

d (mm)	d1 (mm)	L (mm)	z (mm)	weight (kg)
25	20	33	33	0.014
32	20	40	40	0.016
32	25	40	40	0.02
40	20	48	48	0.022
40	25	48	48	0.026
40	32	48	48	0.031
50	25	55	55	0.034
50	32	55	55	0.035
50	40	55	55	0.04
63	32	55	55	0.047
63	40	55	55	0.058
63	50	64	64	0.061
75	63	62	35	0.098
90	63	88	61	0.17
90	75	70	39	0.142
110	90	81	46	0.235

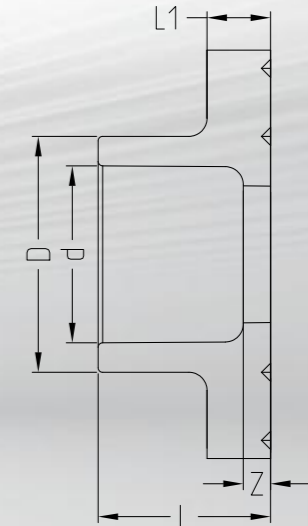
SOCKET FUSION COUPLING

承插焊 管箍



SOCKET FUSION FLANGE

承插焊 法兰适配器



等级: S5/SDR11(PN10) Class: S5/SDR11(PN10)

产品参数

d (mm)	D (mm)	L (mm)	z (mm)	weight (kg)
20	26	33	3	0.016
25	32	36	3	0.024
32	40	40	3	0.036
40	51	46	4	0.059
50	64	52	4	0.084
63	81	60	4	0.185
75	93	70	7	0.219
90	112	81	9	0.336
110	134	96	12	0.657

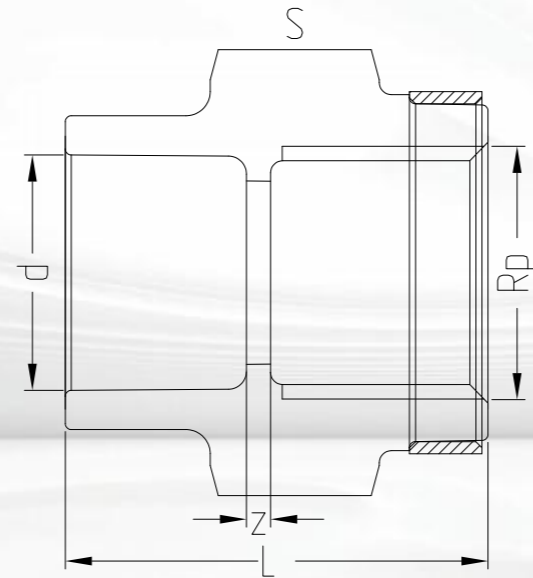
等级: S5/SDR11(PN10), 平面 / 细齿面组合 Class: Flat/Serrated surface combination

产品参数

DN (mm)	d (mm)	D (mm)	D1 (mm)	L (mm)	L1 (mm)	z (mm)	weight (kg)
15	20	26	45	19	7	3	0.011
20	25	32	58	21	9	3	0.022
25	32	40	68	23	10	3	0.033
32	40	50	80	25	11	4	0.046
40	50	61	90	28	12	4	0.06
50	63	76	105	32	14	4	0.09
65	75	90	125	36	16	5	0.155
80	90	108	140	42	17	5	0.204
100	110	131	160	48	18	6	0.286

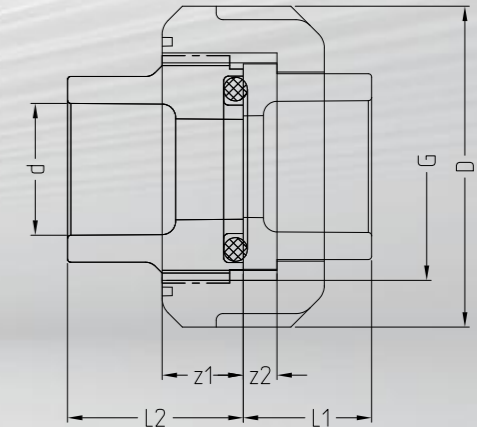
SOCKET FUSION CONNECTION ADAPTOR

承插焊 适配缩节



SOCKET FUSION UNION

承插焊 活接



等级: S5/SDR11(PN10) Class: S5/SDR11(PN10)

一端为 SDR11 承插端, 一端为 Rp 内螺纹, 带增强圈
 With butt fusion end SDR11 and the other end is female thread Rp, reinforced
 不锈钢增强圈 (A2)
 Reinforcing ring stainless (A2)
 可连接塑料或金属螺纹
 Connection to plastic or metal threads
 请勿使用对 PP 有害的螺纹密封胶
 Do not use thread sealing pastes that are harmful to PP
 安装时避免存留应力, 避免温度大范围循环变化
 Install with low mechanical stress and avoid large cyclic temperature changes

产品参数

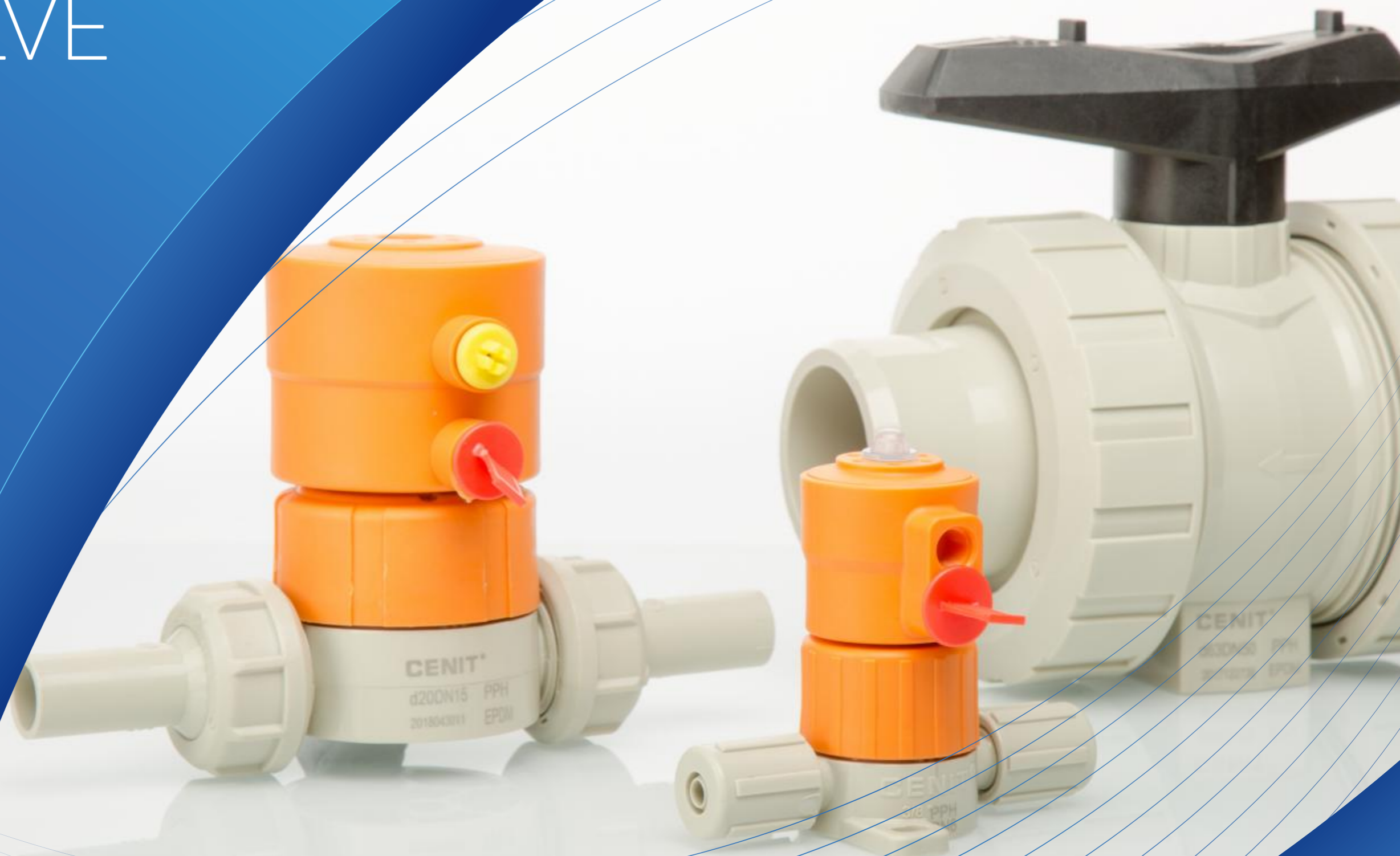
d (mm)	L (mm)	S (mm)	z (mm)	Rp (mm)	weight (kg)
20	35	32	3	1/2	0.018
25	40	36	3	3/4	0.025
32	45	46	6	1	0.04
40	53	55	9	1 1/4	0.064
50	54	65	5	1 1/2	0.089
63	62	80	5	2	0.144

等级: S5/SDR11(PN10) Class: S5/SDR11(PN10) / 垫片: EPDM/FPM O 型圈 Gasket: EPDM/FPM O-ring

产品参数

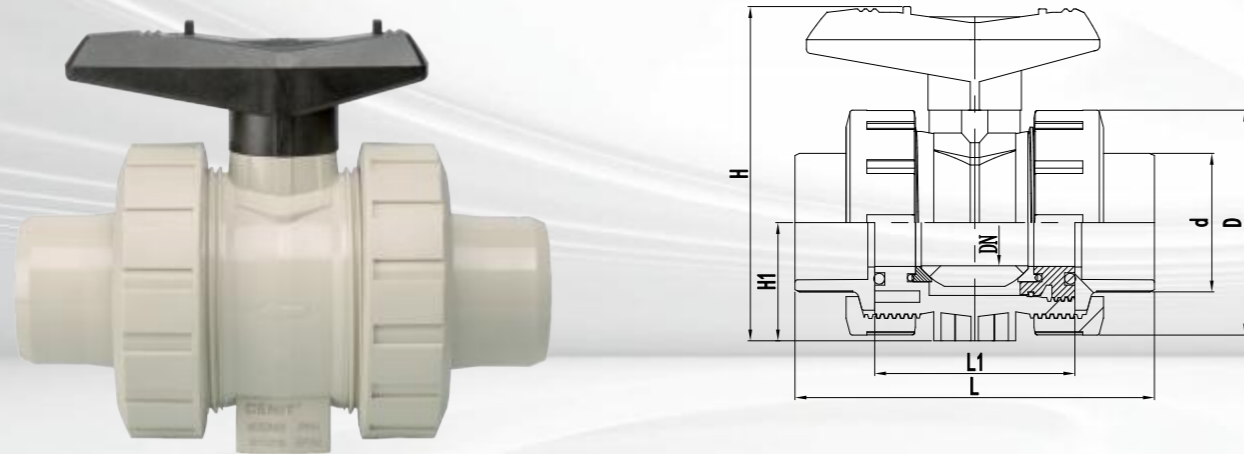
d (mm)	D (mm)	G (inch)	L1 (mm)	L2 (mm)	z1 (mm)	z2 (mm)	weight (kg)
20	47.5	1	19	26	5	12	0.038
25	58	1 1/4	21	28	5	13	0.062
32	65	1 1/2	23	30	6	14	0.08
40	77	2	27	34	6	16	0.137
50	84	2 1/4	30	39	7	18	0.136
63	105	2 1/2	34	47	8	20	0.251

阀门 VALVE



BUTT FUSION TRUE UNION BALL VALVE

对焊 双由任球阀



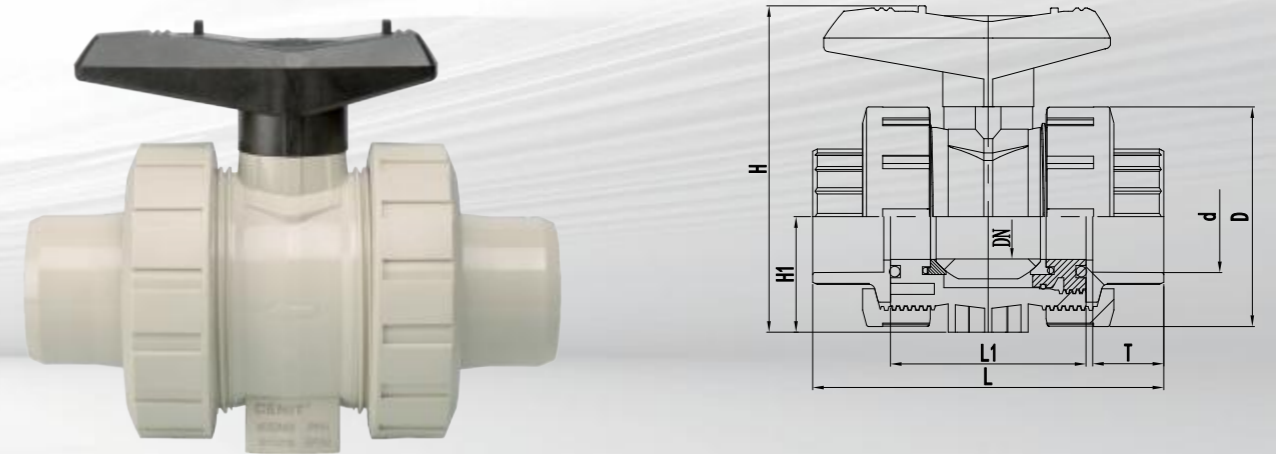
等级: PN10 Class: PN10 / 垫片: EPDM/FPM O 型圈 Gasket: EPDM/FPM O-ring
PTFE 球密封 Ball seals PTFE / 内置不锈钢固定螺帽 Inserting stainless fixed nut

产品参数

d (mm)	DN (mm)	D (mm)	L (mm)	L1 (mm)	H (mm)	H1 (mm)	weight (kg)
20	15	50.00	130.00	55.00	15.50	17.00	0.12
25	20	59.00	143.00	65.00	20.50	19.50	0.18
32	25	70.00	150.00	70.00	26.00	23.00	0.255
40	30	85.00	170.00	84.00	33.00	27.00	0.44
50	40	99.00	190.00	88.00	39.00	32.00	0.62
63	50	125.00	220.00	100.00	51.00	38.50	1.2

SOCKET FUSION TRUE UNION BALL VALVE

承插焊 双由任球阀



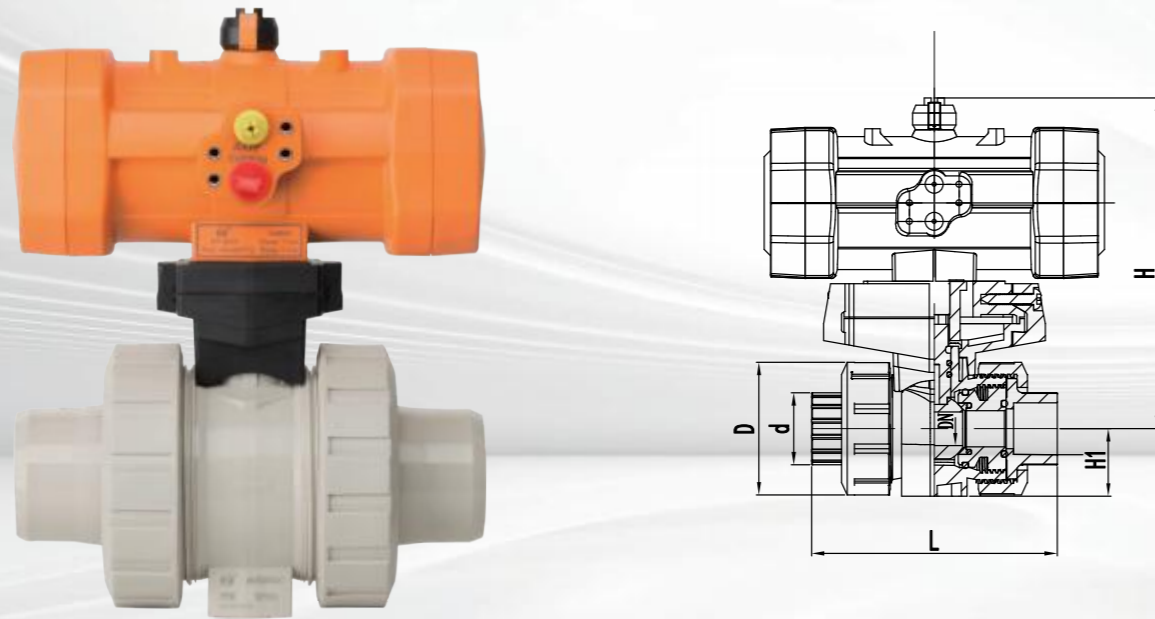
等级: PN10 Class: PN10 / 垫片: EPDM/FPM O 型圈 Gasket: EPDM/FPM O-ring
PTFE 球密封 Ball seals PTFE / 内置不锈钢固定螺帽 Inserting stainless fixed nut

产品参数

d (mm)	DN (mm)	D (mm)	L (mm)	L1 (mm)	H (mm)	H1 (mm)	T (mm)	weight (kg)
20	15	50.00	93.00	55.00	15.50	17.00	16.00	0.115
25	20	59.00	106.00	65.00	20.50	19.50	18.00	0.18
32	25	70.00	116.00	70.00	26.00	23.00	20.00	0.255
40	30	85.00	138.00	84.00	33.00	27.00	23.00	0.44
50	40	99.00	148.00	88.00	39.00	32.00	26.00	0.61
63	50	125.00	168.00	100.00	51.00	38.50	30.00	1.145

BUTT FUSION PLASTIC PNEUMATIC TRUE UNION BALL VALVE

对焊 全塑气动双由任球阀



等级: PN10 Class: PN10 / 垫片: EPDM/FPM O 型圈 Gasket: EPDM/FPM O-ring
PTFE 球密封 Ball seals PTFE / 内置不锈钢固定螺帽 Inserting stainless fixed nut

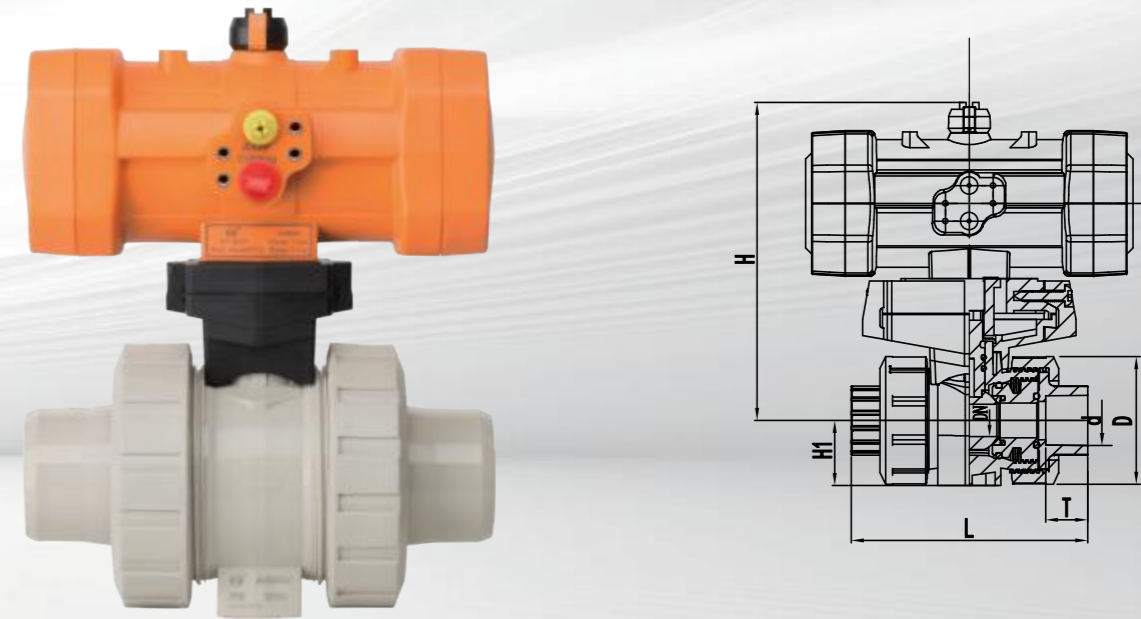
执行器: 单作用, 弹簧自动复位, 常闭
Actuator: Single-acting, Spring automatic return, normally closed
打开及关闭时间: 1~2 s
Open and close time: 1-2 s
全塑料外壳, 可以在高腐蚀环境中使用
It can be used in high corrosive environment as it is all plastic material
可以配套电磁阀及位置开关使用
Matching with solenoid valves and position switch

产品参数

d (mm)	DN (mm)	D (mm)	L (mm)	H (mm)	H1 (mm)
20	15	50.00	130.00	159.00	17.00
25	20	59.00	143.00	168.00	19.50
32	25	70.00	150.00	168.00	23.00
40	30	85.00	170.00	202.00	27.00
50	40	99.00	190.00	202.00	32.00
63	50	125.00	220.00	225.00	38.50

SOCKET FUSION PLASTIC PNEUMATIC TRUE UNION BALL VALVE

承插焊 全塑气动双由任球阀



等级: PN10 Class: PN10 / 垫片: EPDM/FPM O 型圈 Gasket: EPDM/FPM O-ring
PTFE 球密封 Ball seals PTFE / 内置不锈钢固定螺帽 Inserting stainless fixed nut

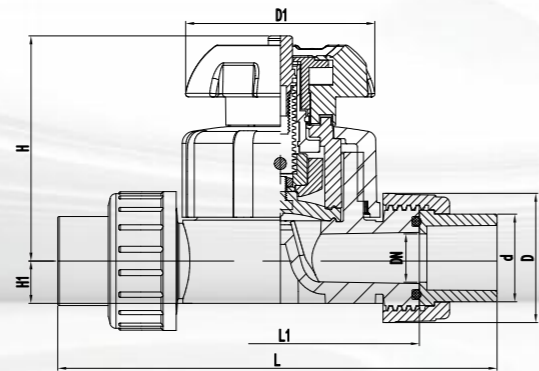
执行器: 单作用, 弹簧自动复位, 常闭
Actuator: Single-acting, Spring automatic return, normally closed
打开及关闭时间: 1~2 s
Open and close time: 1-2 s
全塑料外壳, 可以在高腐蚀环境中使用
It can be used in high corrosive environment as it is all plastic material
可以配套电磁阀及位置开关使用
Matching with solenoid valves and position switch

产品参数

d (mm)	DN (mm)	D (mm)	L (mm)	H (mm)	H1 (mm)	T (mm)
20	15	50.00	93.00	159.00	17.00	16.00
25	20	59.00	106.00	168.00	19.50	18.00
32	25	70.00	116.00	168.00	23.00	20.00
40	30	85.00	138.00	202.00	27.00	23.00
50	40	99.00	148.00	202.00	32.00	26.00
63	50	125.00	168.00	225.00	38.50	30.00

BUTT FUSION DIAPHRAGM VALVE

对焊 隔膜阀



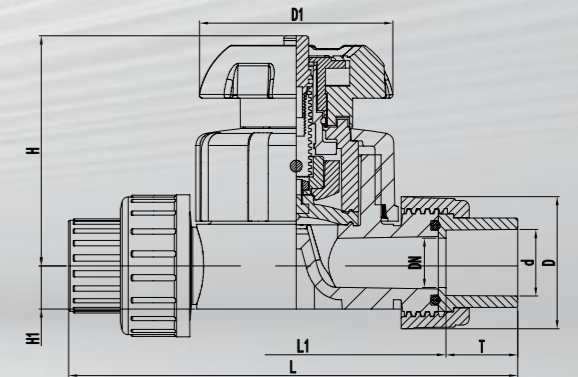
等级: PN10 Class: PN10 / 垫片: EPDM 膜片/O型圈 Gasket: EPDM diaphragm/O-ring
 内置不锈钢固定螺帽 Inserting stainless fixed nut

产品参数

d (mm)	DN (mm)	D (mm)	L (mm)	L1 (mm)	H (mm)	H1 (mm)	D1 (mm)	weight (kg)
20	15	46.50	201.00	95.00	90.00	14.00	80.00	0.369
25	20	53.50	230.00	118.00	102.00	18.00	80.00	0.5
32	25	64.00	243.00	123.00	119.00	21.00	94.00	1.101
40	30	74.50	267.00	141.00	126.00	26.00	117.00	1.309
50	40	85.00	291.00	161.00	139.00	33.00	117.00	2.313
63	50	100.00	327.00	191.00	172.00	39.00	152.00	3.044

SOCKET FUSION DIAPHRAGM VALVE

承插焊 隔膜阀



等级: PN10 Class: PN10 / 垫片: EPDM 膜片/O型圈 Gasket: EPDM diaphragm/O-ring
 内置不锈钢固定螺帽 Inserting stainless fixed nut

产品参数

d (mm)	DN (mm)	D (mm)	L (mm)	L1 (mm)	H (mm)	H1 (mm)	D1 (mm)	T (mm)	weight (kg)
20	15	46.50	133.00	95.00	90.00	14.00	80.00	16.00	0.361
25	20	53.50	160.00	118.00	102.00	18.00	80.00	18.00	0.488
32	25	64.00	169.00	123.00	119.00	21.00	94.00	20.00	1.081
40	30	74.50	191.00	141.00	126.00	26.00	117.00	23.00	1.277
50	40	85.00	217.00	161.00	139.00	33.00	117.00	26.00	2.305
63	50	100.00	247.00	191.00	172.00	39.00	152.00	30.00	3.03

QUICK OPERATED PNEUMATIC DIAPHRAGM VALVE

快接气动隔膜阀



等级: PN6 Class: PN6 / 垫片: PTFE 膜片 Gasket: PTFE diaphragm

执行器: 单作用, 弹簧自动复位, 常闭

Actuator: Single-acting, Spring automatic return, normally closed

打开及关闭时间: 1~2 s

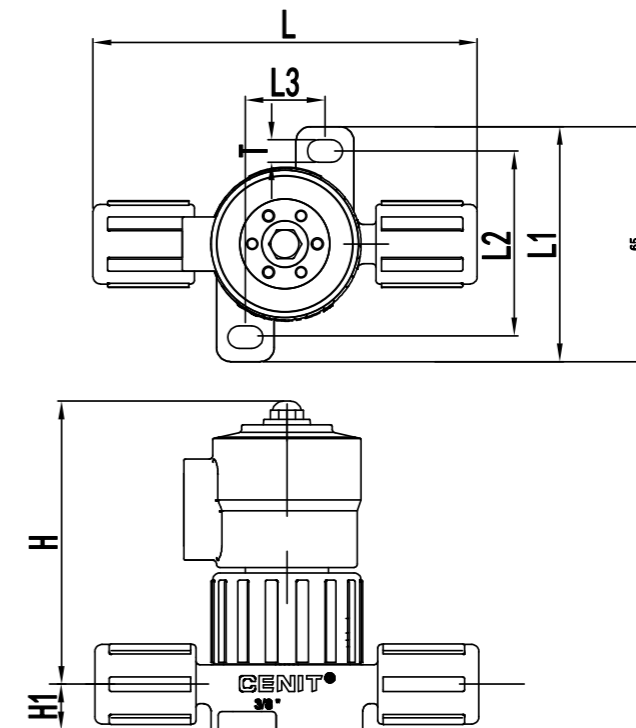
Open and close time: 1-2 s

全塑料外壳, 可以在高腐蚀环境中使用

It can be used in high corrosive environment as it is all plastic material

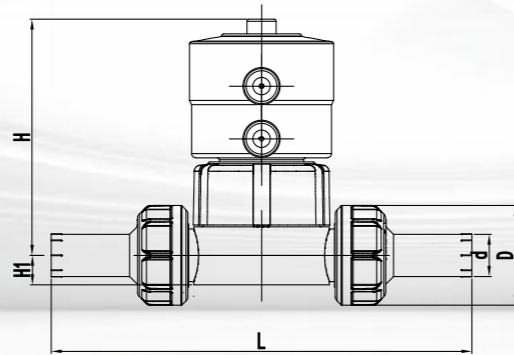
产品参数

d (mm)	L (mm)	L1 (mm)	L2 (mm)	L3 (mm)	H (mm)	H1 (mm)	T (mm)
3/8"	106.00	65.00	51.00	22.00	78.00	12.50	6.20



BUTT FUSION PLASTIC PNEUMATIC DIAPHRAGM VALVE

对焊 全塑气动隔膜阀



等级: PN6 Class: PN6 / 垫片: EPDM 膜片 / O 型圈 Gasket: EPDM diaphragm/O-ring

执行器: 单作用, 弹簧自动复位, 常闭

Actuator: Single-acting, Spring automatic return, normally closed

打开及关闭时间: 1~2 s

Open and close time: 1-2 s

全塑料外壳, 可以在高腐蚀环境中使用

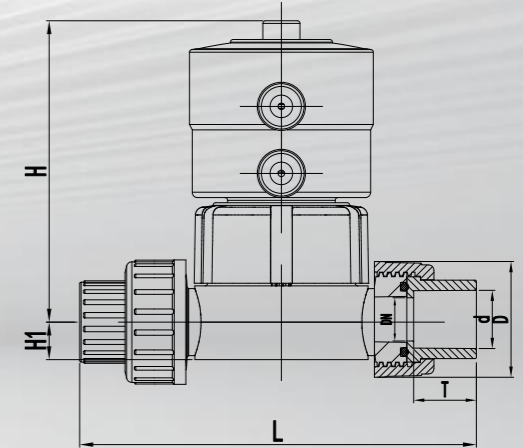
It can be used in high corrosive environment as it is all plastic material

产品参数

d (mm)	L (mm)	D (mm)	H (mm)	H1 (mm)
20	152.50	46.50	112.00	14.00
25	165.50	53.50	120.00	18.00

SOCKET FUSION PLASTIC PNEUMATIC DIAPHRAGM VALVE

承插焊 全塑气动隔膜阀



等级: PN6 Class: PN6 / 垫片: EPDM 膜片 / O 型圈 Gasket: EPDM diaphragm/O-ring

执行器: 单作用, 弹簧自动复位, 常闭

Actuator: Single-acting, Spring automatic return, normally closed

打开及关闭时间: 1~2 s

Open and close time: 1-2 s

全塑料外壳, 可以在高腐蚀环境中使用

It can be used in high corrosive environment as it is all plastic material

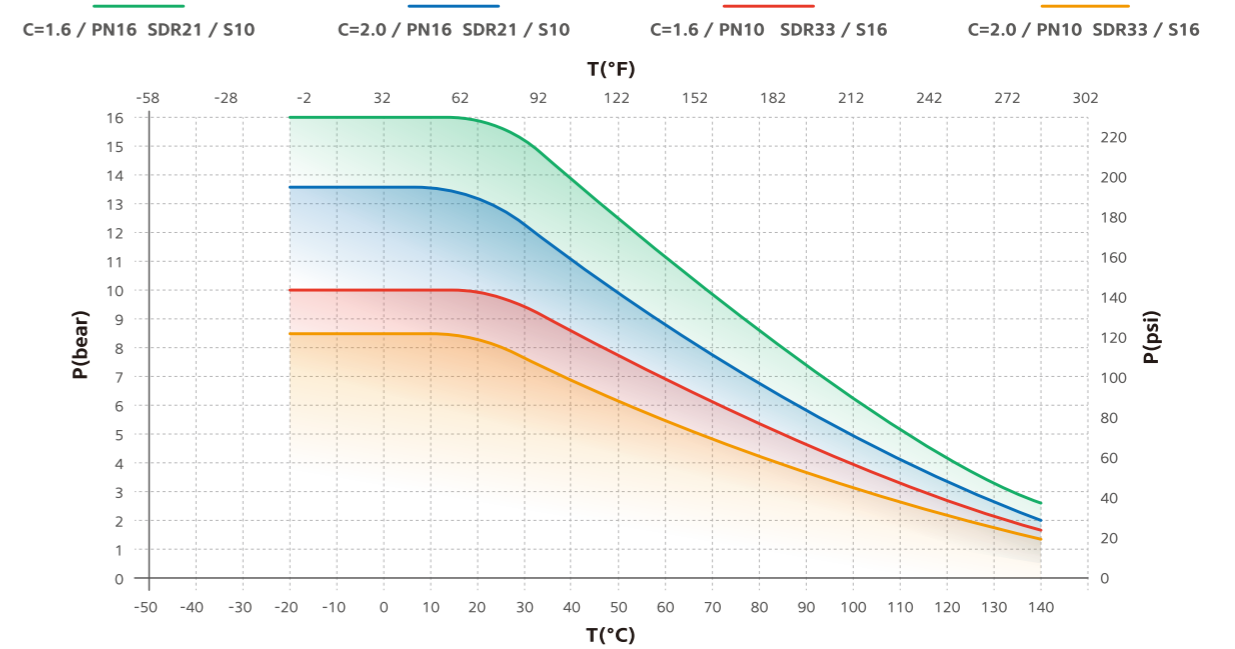
产品参数

d (mm)	L (mm)	D (mm)	H (mm)	H1 (mm)
20	84.50	46.50	112.00	14.00
25	95.50	53.50	120.00	18.00

进口原料聚偏二氟乙烯 (PVDF) 高纯含氟聚合物

PVDF 管道和管件应用范围

(25 年使用年限, 设计系数 C=2.0&1.6)



PVDF

管材 / 管件 / 阀门

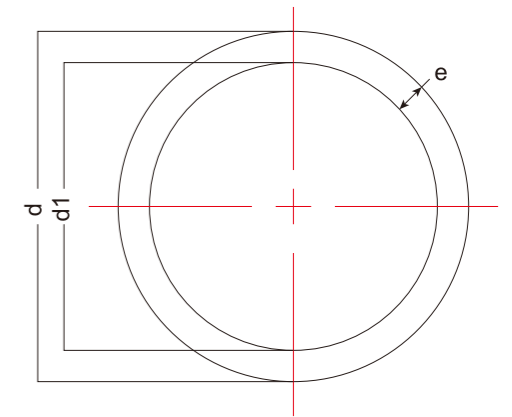
PVDF PIPE/FITTING/VALVE

SERIES AND SIZE OF PVDF PIPE PVDF 管材系列和规格尺寸

等级: PN16 Class: PN16 / 长度: 5米 Length: 5meters

产品参数

d (mm)	weight (kg)	d1 (mm)	e (mm)
20	0.21	16.2	1.9
25	0.269	21.2	1.9
32	0.435	27.2	2.4
40	0.563	35.2	2.4
50	0.85	44	3
63	1.09	57	3
75	1.55	67.8	3.6
90	2.23	81.4	4.3
110	3.33	99.4	5.3
125	4.242	113	6
140	5.312	126.6	6.7
160	6.961	144.6	7.7
200	10.862	180.8	9.6
225	13.7	203.4	10.8



管材 PIPE

ISO 10931

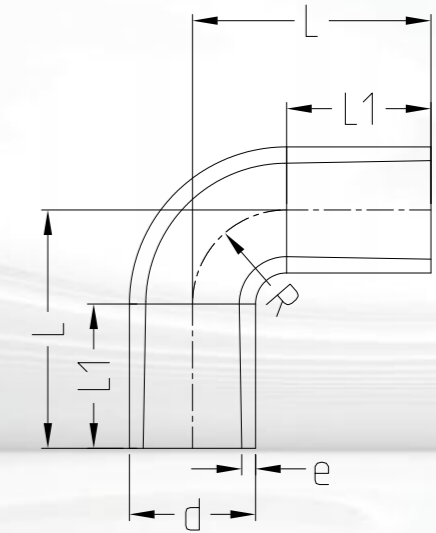
Professional strength
builds easy life

专业实力构筑轻松生活



BUTT FUSION ELBOW 90°

对焊 90°弧形弯头



等级: PN16 Class: PN16

产品参数

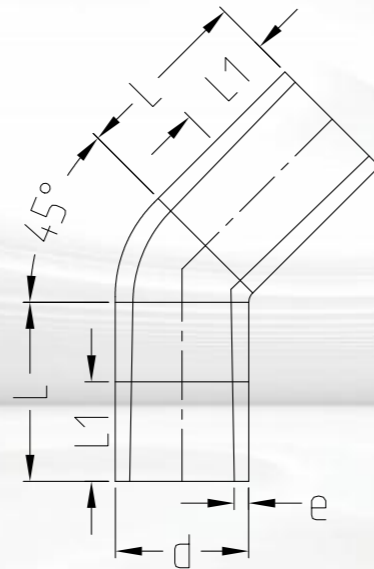
d (mm)	weight (kg)	L (mm)	L1 (mm)	R (mm)	e (mm)
20	0.016	38	23	15	1.9
25	0.022	42	23	19	1.9
32	0.038	46	21	24	2.4
40	0.055	51	21	30	2.4
50	0.095	58	21	37	3
63	0.138	66	21	45	3
75	0.285	100	25	75	3.6
90	0.449	115	25	90	4.3
110	0.736	135	25	110	5.3
125	1.232	125	28	116	6
140	1.584	140	33	125	6.7
160	2.258	160	33	145	7.7
200	3.798	200	33	185	9.6
225	5.726	220	33	205	10.8

管件 PIPE FITTING

ISO 10931

BUTT FUSION ELBOW 45°

对焊 45°弯头



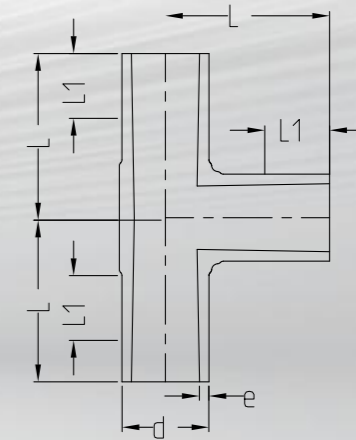
等级: PN16 Class: PN16

产品参数

d (mm)	weight (kg)	L (mm)	L1 (mm)	R (mm)	e (mm)
20	0.019	32	24	1.9	1.9
25	0.025	34	25	1.9	1.9
32	0.038	36	25	2.4	2.4
40	0.054	39	25	2.4	2.4
50	0.084	42	29	3	3
63	0.121	47	29	3	3
75	0.16	49	29	3.6	3.6
90	0.294	57	34	4.3	4.3
110	0.48	70	43	5.3	5.3
125	0.78	79	48	6	6
140	1	88	55	6.7	6.7
160	1.47	100	60	7.7	7.7
200	2.8	124	75	9.6	9.6
225	4	140	85	10.8	10.8

BUTT FUSION 90° TEE

对焊 90°正三通



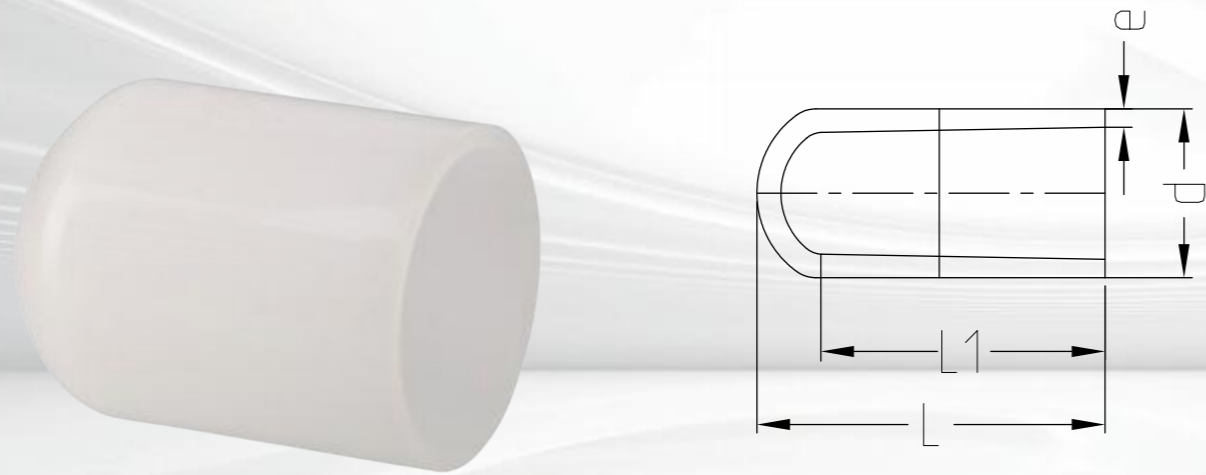
等级: PN16 Class: PN16

产品参数

d (mm)	weight (kg)	L (mm)	L1 (mm)	R (mm)	e (mm)
20	0.028	38	25	1.9	1.9
25	0.04	42	25	1.9	1.9
32	0.065	46	25	2.4	2.4
40	0.095	51	25	2.4	2.4
50	0.156	58	25	3	3
63	0.27	66	24	3	3
75	0.364	75	26	3.6	3.6
90	0.628	90	31	4.3	4.3
110	1.122	110	37	5.3	5.3
125	1.98	125	45	6	6
140	2.6	140	50	6.7	6.7
160	3.5	160	55	7.7	7.7
200	6.725	200	65	9.6	9.6
225	8.986	220	70	10.8	10.8

BUTT FUSION CAP

对焊 管帽



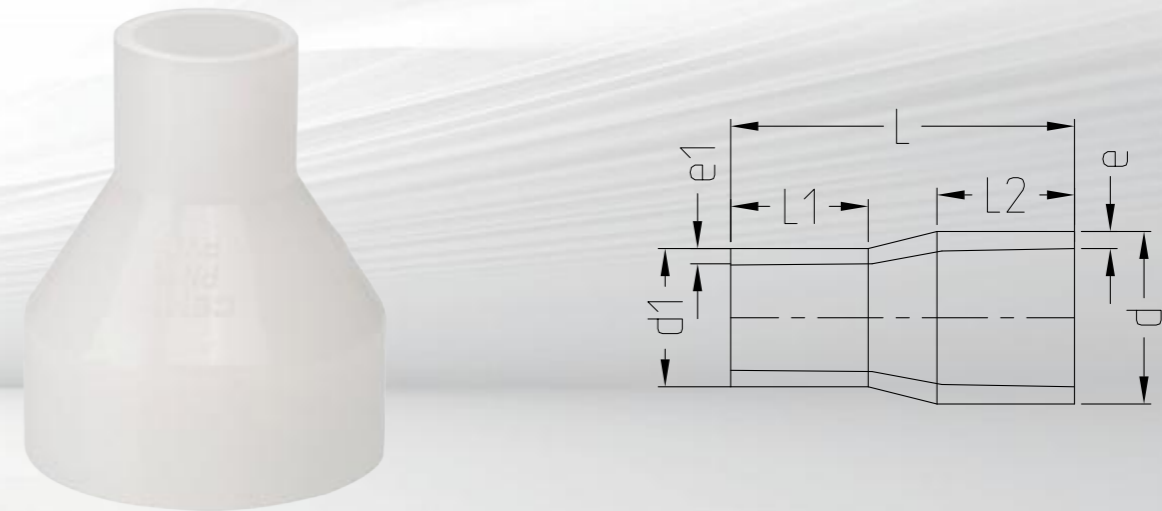
等级: PN16 Class: PN16

产品参数

d (mm)	weight (kg)	L (mm)	L1 (mm)	e (mm)
20	0.0115	42	34.2	1.9
25	0.0115	50	39.3	1.9
32	0.0299	55	41.7	2.4
40	0.0414	65	48.2	2.4
50	0.0645	70	49.1	3
63	0.12	80	56.7	3
75	0.189	90	59.3	3.6
90	0.1605	105	65.8	4.3
110	0.576	125	79.4	5.3

BUTT FUSION BUSHING

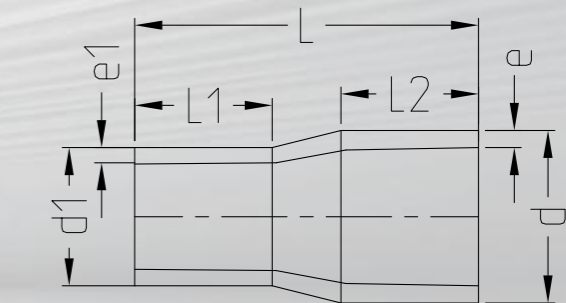
对焊 变径



等级: PN16 Class: PN16

产品参数

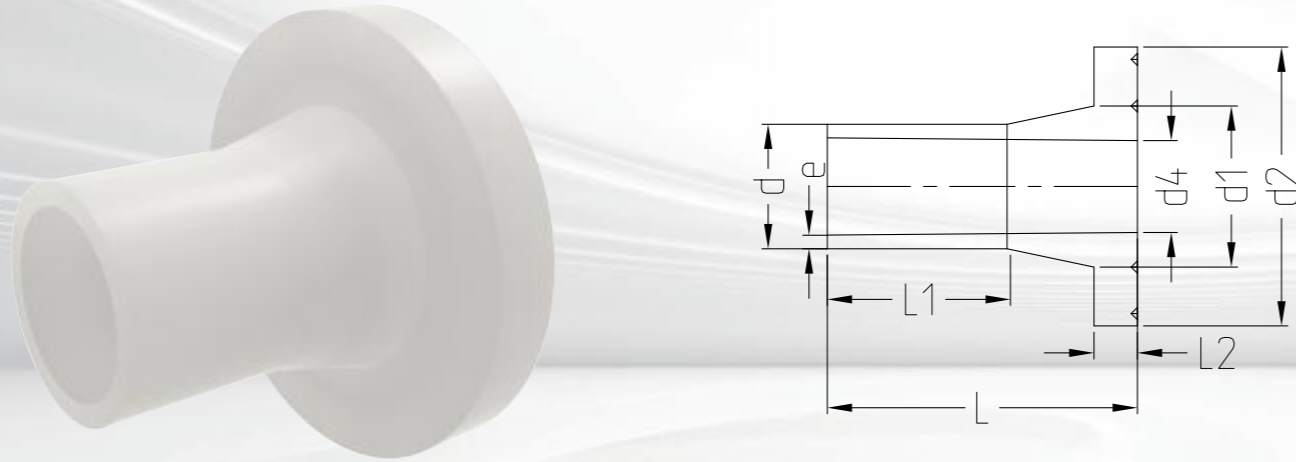
d (mm)	d1 (mm)	weight (kg)	L (mm)	L1 (mm)	L2 (mm)	e (mm)	e1 (mm)
25	20	0.021	50	20	20	1.9	1.9
32	20	0.028	50	20	20	2.4	1.9
32	25	0.028	50	20	24	2.4	1.9
40	20	0.037	55	20	20	2.4	1.9
40	25	0.033	55	20	20	2.4	1.9
40	32	0.038	55	20	24	2.4	2.4
50	25	0.054	60	20	20	3	1.9
50	32	0.059	60	20	20	3	2.4
50	40	0.06	60	20	20	3	2.4
63	32	0.078	65	20	20	3	2.4
63	40	0.082	65	20	20	3	2.4
63	50	0.09	65	20	20	3	3
75	40	0.12	70	20	20	3.6	2.4
75	50	0.125	70	20	20	3.6	3



d (mm)	d1 (mm)	weight (kg)	L (mm)	L1 (mm)	L2 (mm)	e (mm)	e1 (mm)
75	63	0.128	70	20	20	3.6	3
90	63	0.15	75	22	20	4.3	3
90	75	0.164	75	22	20	4.3	3.6
110	75	0.213	90	28	20	5.3	3.6
110	90	0.282	90	28	20	5.3	4.2
125	110	0.38	100	31	32	6	5.3
140	110	0.45	110	33	29	6.7	5.3
140	125	0.48	110	34	30	6.7	6
160	110	0.65	120	39	27	7.7	5.3
160	140	0.45	120	40	35	7.7	6.7
200	160	1.34	145	50	40	9.6	7.7
225	110	1.54	160	55	35	10.8	5.3
225	160	1.73	160	55	40	10.8	7.7
225	200	1.98	160	55	50	10.8	9.6

BUTT FUSION FLANGE ADAPTER

对焊 法兰适配器



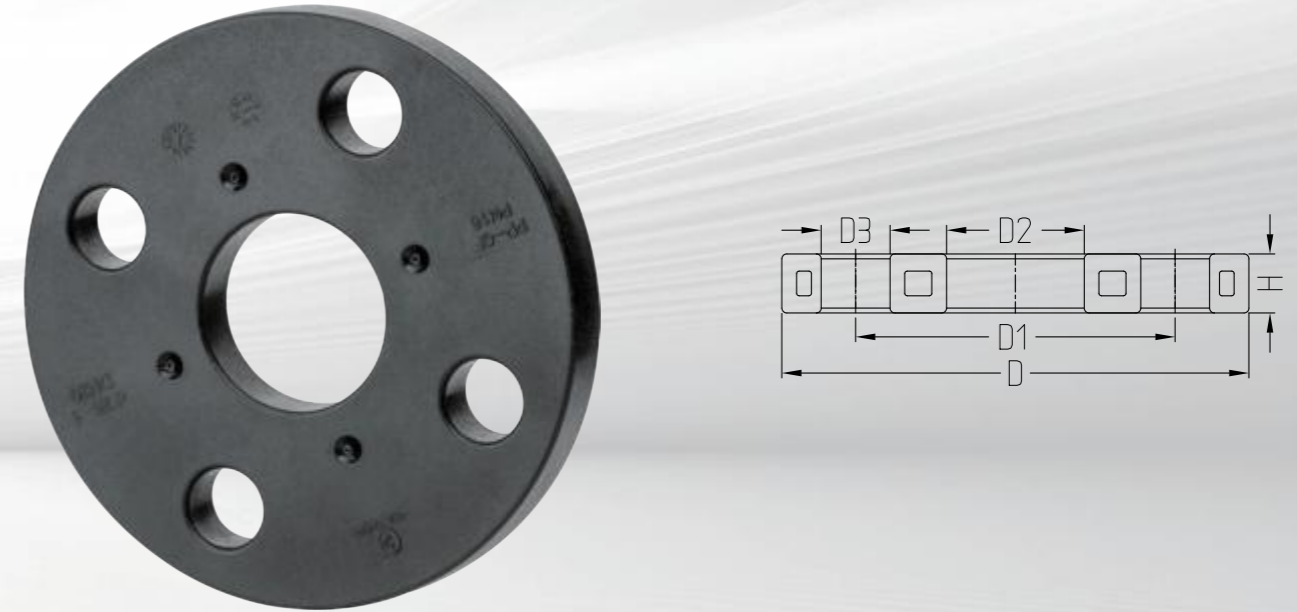
等级: PN16, 平面 / 细齿面组合 Class: PN16 Flat/Serrated surface combination

产品参数

d (mm)	DN (mm)	weight (kg)	d1 (mm)	d2 (mm)	d4 (mm)	L (mm)	L1 (mm)	L2 (mm)	e (mm)
20	15	0.035	26	45	14.8	50	29	7	1.9
25	20	0.056	32	58	19.3	52	27	9	1.9
32	25	0.096	40	68	24.8	54	28	10	2.4
40	32	0.132	50	80	37.4	64	30	11	2.4
50	40	0.175	61	90	43.4	67	30	12	3
63	50	0.258	76	105	54.5	74	30	14	3
75	65	0.413	90	125	70.6	80	30	16	3.6
90	80	0.528	108	140	82.6	87	35	17	4.3
110	100	0.745	131	160	105.6	102	41	18	5.3
125	125	0.86	165	190	102	82	35	25	6
140	125	0.906	165	190	114	89	39	25	6.7
160	150	1.2	188	215	131	92	45	25	7.7
200	200	1.9	248	270	163	100	30	32	9.6
225	200	2	248	270	184	100	35	32	10.8

PP-STEEL BACKING FLANGE

支撑法兰, 钢衬 PP



等级: 公制 PN16 CLASS: Metric PN16

材质: 钢衬 PP (30% 玻璃纤维增强) MATERIAL: PP with steel insert(30% increase of the glass-fibre reinforcement)

连接尺寸: IS7005, EN1092, BS4504, DIN2501 Connecting dimensions: IS7005, EN1092, BS4504, DIN2501

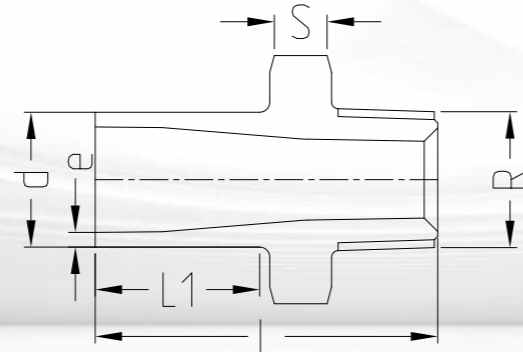
AL: 螺柱孔数 AL: number of holes / SC: 使用螺栓规格 SC: Bolt Specification

产品参数

d (mm)	DN (mm)	PN (bar)	weight (kg)	D (mm)	D1 (mm)	D2 (mm)	D3 (mm)	H (mm)	AL	SC
20	15	16	0.216	95	65	28	14	12	4	M12
25	20	16	0.276	105	75	34	14	12	4	M12
32	25	16	0.429	115	85	42	14	16	4	M12
40	32	16	0.67	140	100	51	18	16	4	M16
50	40	16	0.86	150	110	62	18	18	4	M16
63	50	16	0.93	165	125	78	18	18	4	M16
75	65	16	1.34	185	145	92	18	18	4	M16
90	80	16	1.4	200	160	108	18	20	8	M16
110	100	16	1.58	220	180	128	18	20	8	M16
125	125	16	2.318	250	210	167	18	20	8	M16
140	125	16	2.318	250	210	167	18	24	8	M16
160	150	16	3.491	285	240	190	22	24	8	M20
200	200	10	5.6	340	295	250	22	27	8	M20
225	200	10	5.6	340	295	250	22	27	8	M20

BUTT FUSION ADAPTOR

对焊 适配接头



等级: PN16 Class: PN16

一端为对焊端, 一端为 R 外螺纹

One end with butt fusion, the other is R type male thread

请勿使用对 PVDF 有害的螺纹密封胶

Do not use thread sealing pastes that are harmful to PP

安装时避免存留应力, 避免温度大范围循环变化

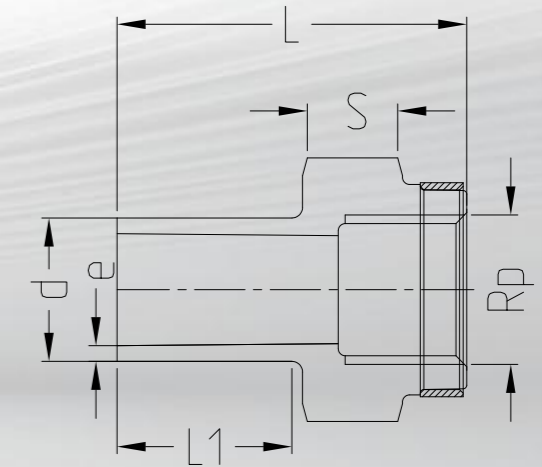
Install with low mechanical stress and avoid large cyclic temperature changes

产品参数

d (mm)	weight (kg)	L (mm)	L1 (mm)	S (mm)	e (mm)	Rp (inch)
20	0.032	51	24.5	32	1.9	1/2
25	0.04	52	24	36	1.9	3/4
32	0.051	55	23	46	2.4	1
40	0.075	58	23	55	2.4	1 1/4
50	0.123	60	23.5	65	3	1 1/2
63	0.175	67	25	80	3	2

BUTT FUSION CONNECTION ADAPTOR

对焊 适配缩节



等级: PN16 Class: PN16

一端为对焊端, 一端为 Rp 内螺纹

With butt fusion spigot and the other end is female thread Rp

只可连接塑料螺纹

Threaded connection only

请勿使用对 PVDF 有害的螺纹密封胶

Do not use thread sealing pastes that are harmful to PVDF

安装时避免存留应力, 避免温度大范围循环变化

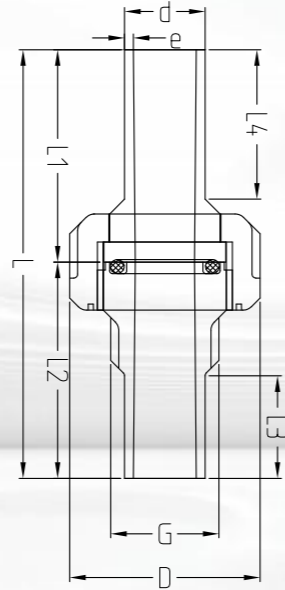
Install with low mechanical stress and avoid large cyclic temperature changes

产品参数

d (mm)	L (mm)	L1 (mm)	S (mm)	e (mm)	Rp (inch)
20	49	24.5	32	1.9	1/2
25	51	24	36	1.9	3/4
32	55	23	46	2.4	1
40	57	23	55	2.4	1 1/4
50	60	23.5	65	3	1 1/2
63	62	25	80	3	2

BUTT FUSION UNION

对焊 活接



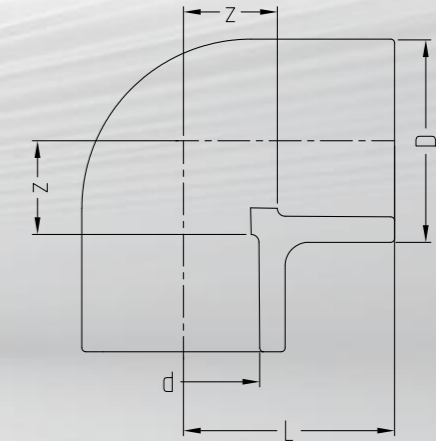
等级: PN16 Class: PN16 / 垫片: FPM O 型圈 Gasket: FPM O-ring

产品参数

d (mm)	weight (kg)	D (mm)	L (mm)	L1 (mm)	L2 (mm)	L3 (mm)	L4 (mm)	G (inch)	e (mm)
20	0.074	47.5	107	53	54	25	37	1	1.9
25	0.11	58	112	56	56	25	26	1 1/4	1.9
32	0.153	65	120	60	60	25	42	1 1/2	2.4
40	0.235	77	126	63	63	26	42	2	2.4
50	0.293	84	131	65.5	65.5	26	45	2 1/4	3
63	0.465	105	137	68	69	27	45	2 1/2	3

SOCKET FUSION ELBOW 90°

承插焊 90°弯头



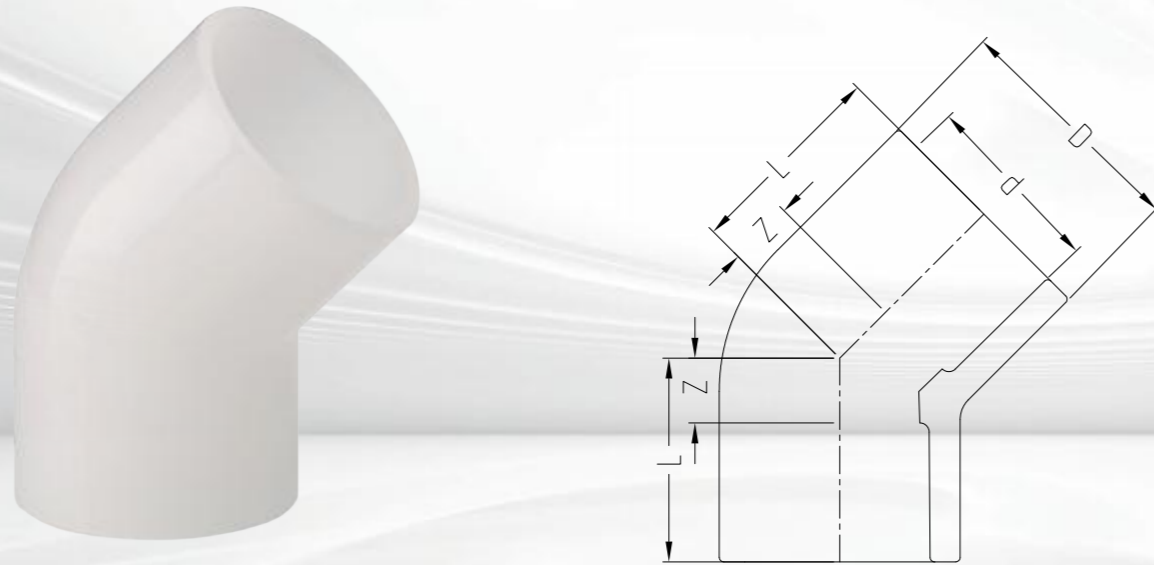
等级: PN16 Class: PN16

产品参数

d (mm)	D (mm)	L (mm)	z (mm)	weight (kg)
20	26	27	9	0.04
25	32	32	11	0.058
32	40	37	15	0.088
40	51	43	19	0.148
50	64	51	24	0.256
63	81	62	30	0.46
75	93	76	45	0.602
90	110	88	53	0.954
110	134	106	65	1.738

SOCKET FUSION ELBOW 45°

承插焊 45°弯头



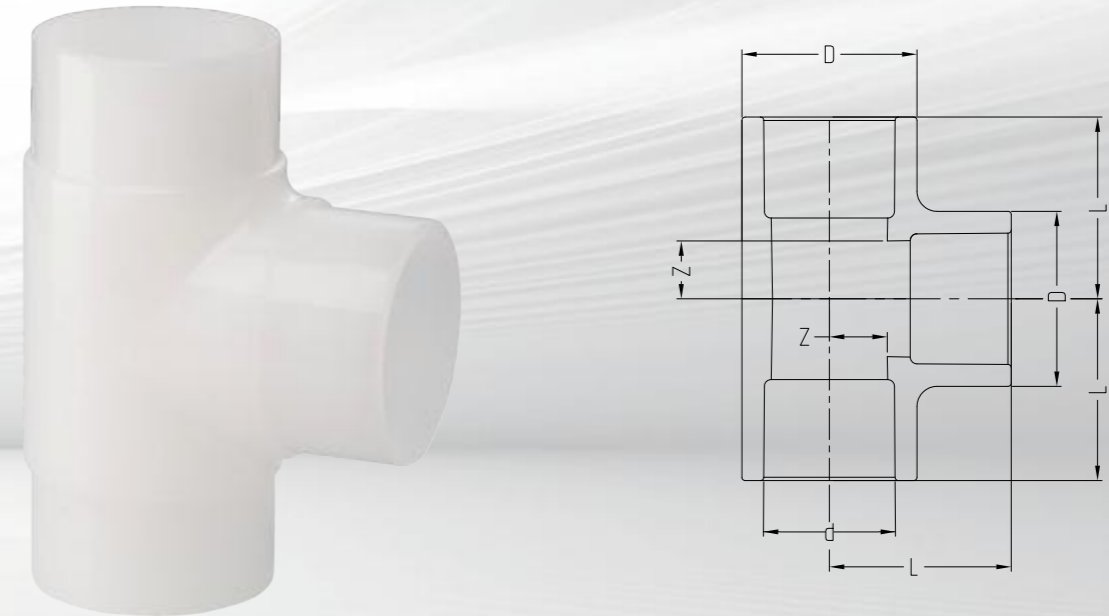
等级: PN16 Class: PN16

产品参数

d (mm)	D (mm)	L (mm)	z (mm)	weight (kg)
20	26	22	7	0.032
25	32	24	7	0.048
32	40	29	10	0.072
40	51	33	12	0.118
50	64	38	14	0.168
63	81	45	17	0.37
75	93	51	20	0.438
90	110	58	23	0.672
110	134	68	27	1.314

SOCKET FUSION 90° TEE

承插焊 90°正三通



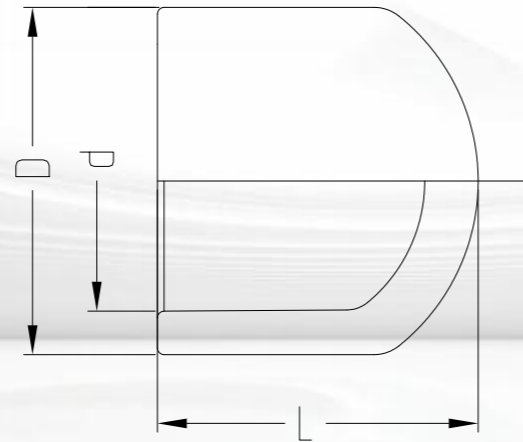
等级: PN16 Class: PN16

产品参数

d (mm)	D (mm)	L (mm)	z (mm)	weight (kg)
20	26	27	9	0.054
25	32	32	11	0.076
32	40	37	15	0.116
40	51	43	19	0.188
50	64	51	24	0.316
63	81	62	30	0.576
75	93	76	45	0.78
90	110	88	53	1.454
110	134	106	65	2.124

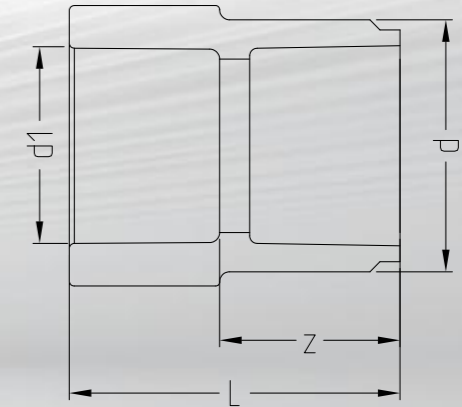
SOCKET FUSION CAP

承插焊 管帽



SOCKET FUSION BUSHING

承插焊 变径



等级: PN16 Class: PN16

产品参数

d (mm)	D (mm)	L (mm)	weight (kg)
20	26	24	0.02
25	32	27	0.028
32	40	33	0.044
40	51	38	0.048
50	64	44	0.1
63	81	51	0.158
75	93	65	0.298
90	110	77	0.554
110	134	93	0.822

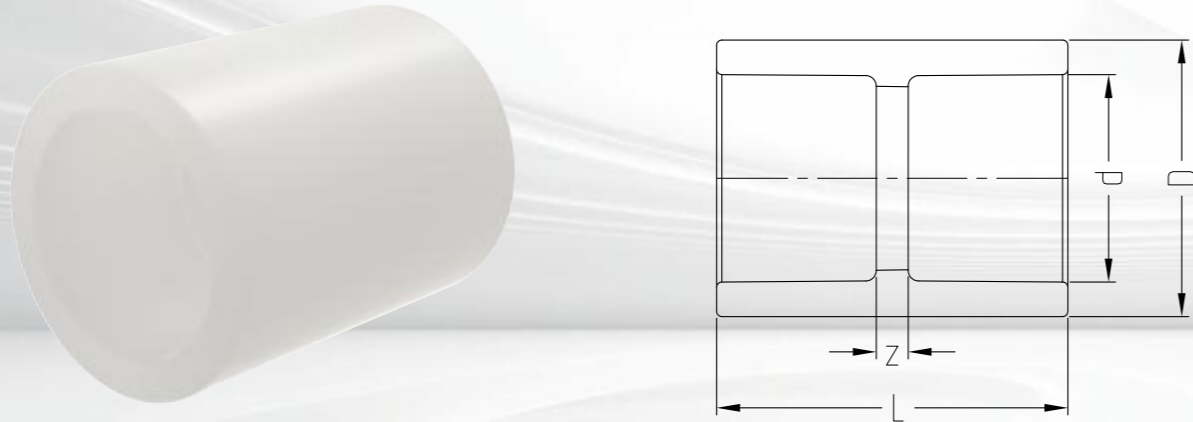
等级: PN16 Class: PN16

产品参数

d (mm)	d1 (mm)	L (mm)	z (mm)	weight (kg)
25	20	33	33	0.028
32	20	40	40	0.032
32	25	40	40	0.04
40	20	48	48	0.044
40	25	48	48	0.052
40	32	48	48	0.062
50	25	55	55	0.068
50	32	55	55	0.07
50	40	55	55	0.08
63	32	55	55	0.094
63	40	55	55	0.116
63	50	64	64	0.122
75	63	62	35	0.196
90	63	88	61	0.34
90	75	70	39	0.284
110	90	81	46	0.47

SOCKET FUSION COUPLING

承插焊 管箍



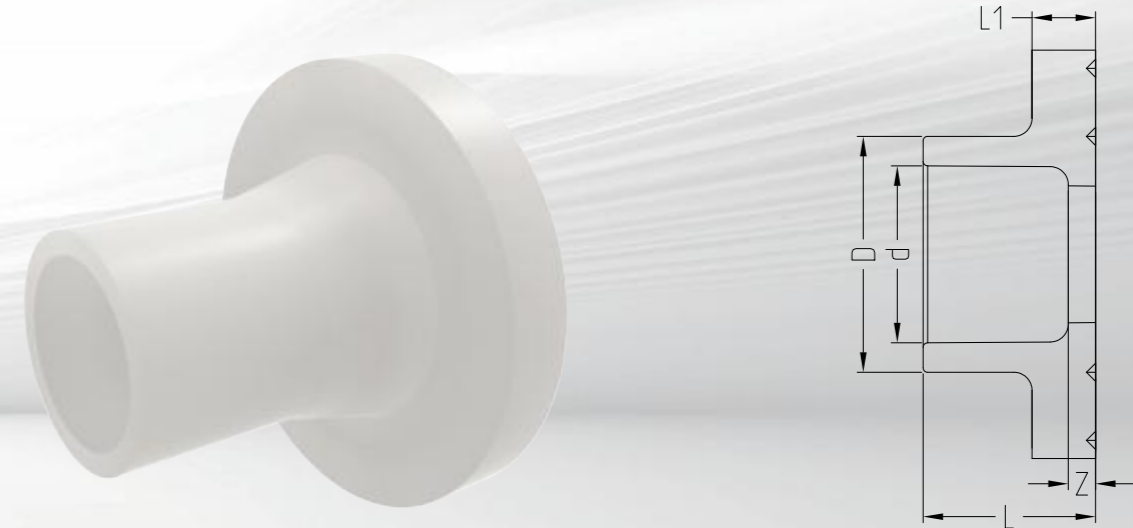
等级: PN16 Class: PN16

产品参数

d (mm)	D (mm)	L (mm)	Z (mm)	weight (kg)
20	26	33	3	0.032
25	32	36	3	0.048
32	40	40	3	0.072
40	51	46	4	0.118
50	64	52	4	0.168
63	81	60	4	0.37
75	93	70	7	0.438
90	112	81	9	0.672
110	134	96	12	1.314

SOCKET FUSION FLANGE

承插焊 法兰适配器



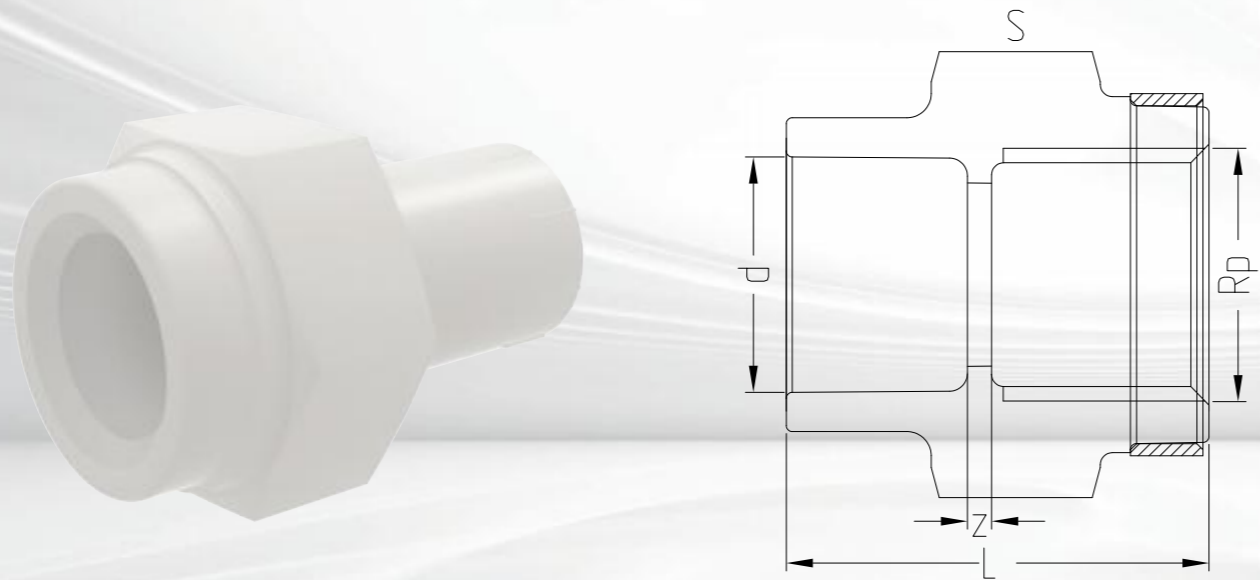
等级: PN16 Class: PN16

产品参数

DN (mm)	d (mm)	D (mm)	D1 (mm)	L (mm)	L1 (mm)	z (mm)	weight (kg)
15	20	26	45	19	7	3	0.022
20	25	32	58	21	9	3	0.044
25	32	40	68	23	10	3	0.066
32	40	50	80	25	11	4	0.092
40	50	61	90	28	12	4	0.12
50	63	76	105	32	14	4	0.18
65	75	90	125	36	16	5	0.31
80	90	108	140	42	17	5	0.408
100	110	131	160	48	18	6	0.572

SOCKET FUSION CONNECTION ADAPTOR

承插焊 适配缩节



等级: PN16 Class: PN16

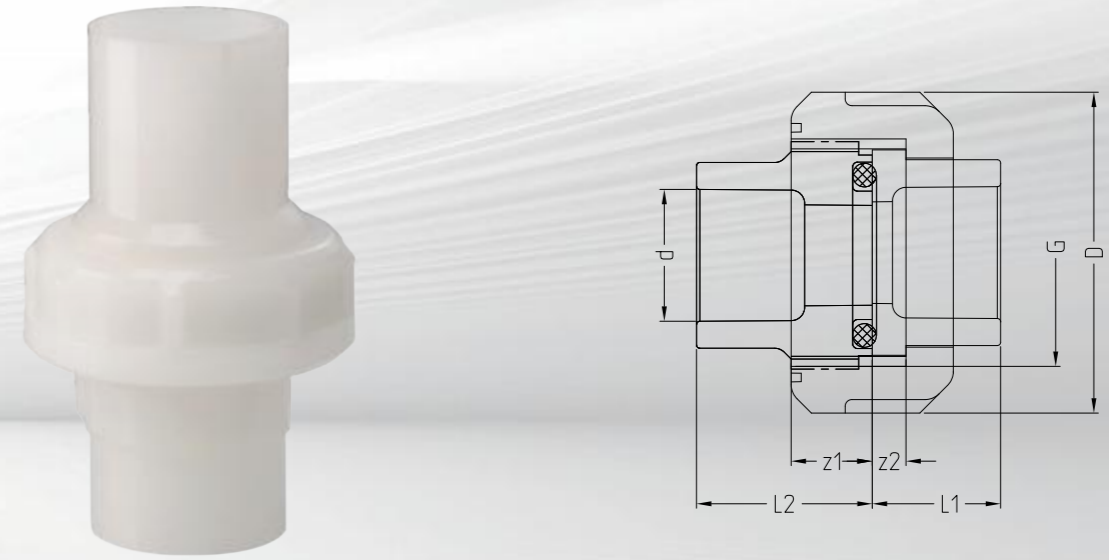
一端为 SDR11 承插端, 一端为 Rp 内螺纹, 带增强圈
 With socket fusion spigot SDR11 and the other end is female thread Rp, reinforced
 不锈钢增强圈 (A2)
 Reinforcing ring stainless (A2)
 可连接塑料或金属螺纹
 Connection to plastic or metal threads
 请勿使用对 PVDF 有害的螺纹密封胶
 Do not use thread sealing pastes that are harmful to PP
 安装时避免存留应力, 避免温度大范围循环变化
 Install with low mechanical stress and avoid large cyclic temperature changes

产品参数

d (mm)	L (mm)	S (mm)	Z (mm)	Rp (mm)	weight (kg)
20	35	32	3	1/2	0.036
25	40	36	3	3/4	0.05
32	45	46	6	1	0.08
40	53	55	9	1 1/4	0.128
50	54	65	5	1 1/2	0.178
63	62	80	5	2	0.288

SOCKET FUSION UNION

承插焊 活接



等级: PN16 Class: PN16 / 垫片: FPM O 型圈 Gasket: FPM O-ring

产品参数

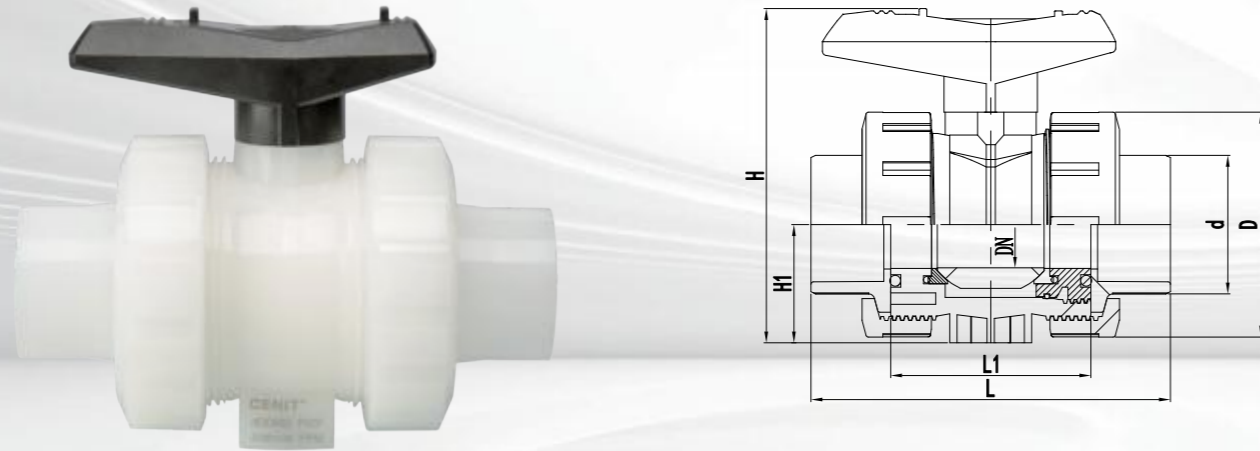
d (mm)	D (mm)	G (inch)	L1 (mm)	L2 (mm)	z1 (mm)	z2 (mm)	weight (kg)
20	47.5	1	19	26	5	12	0.076
25	58	1 1/4	21	28	5	13	0.124
32	65	1 1/2	23	30	6	14	0.16
40	77	2	27	34	6	16	0.274
50	84	2 1/4	30	39	7	18	0.272
63	105	2 1/2	34	47	8	20	0.502

阀门 VALVE



BUTT FUSION TRUE UNION BALL VALVE

对焊 双由任球阀



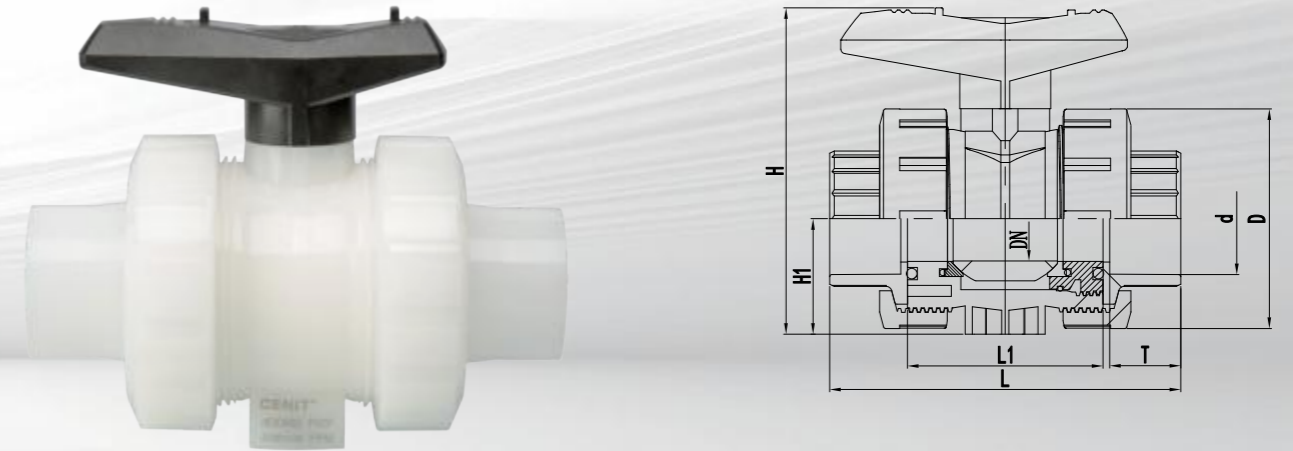
等级: PN16 Class: PN16 / 垫片: FPM O 型圈 Gasket: FPM O-ring
PTFE 球密封 Ball seals PTFE / 内置不锈钢固定螺帽 Inserting stainless fixed nut

产品参数

d (mm)	DN (mm)	D (mm)	L (mm)	L1 (mm)	H (mm)	H1 (mm)	weight (kg)
20	15	50.00	130.00	55.00	15.50	17.00	0.205
25	20	59.00	143.00	65.00	20.50	19.50	0.307
32	25	70.00	150.00	70.00	26.00	23.00	0.434
40	30	85.00	170.00	84.00	33.00	27.00	0.76
50	40	99.00	190.00	88.00	39.00	32.00	1.049
63	50	125.00	220.00	100.00	51.00	38.50	1.947

SOCKET FUSION TRUE UNION BALL VALVE

承插焊 双由任球阀



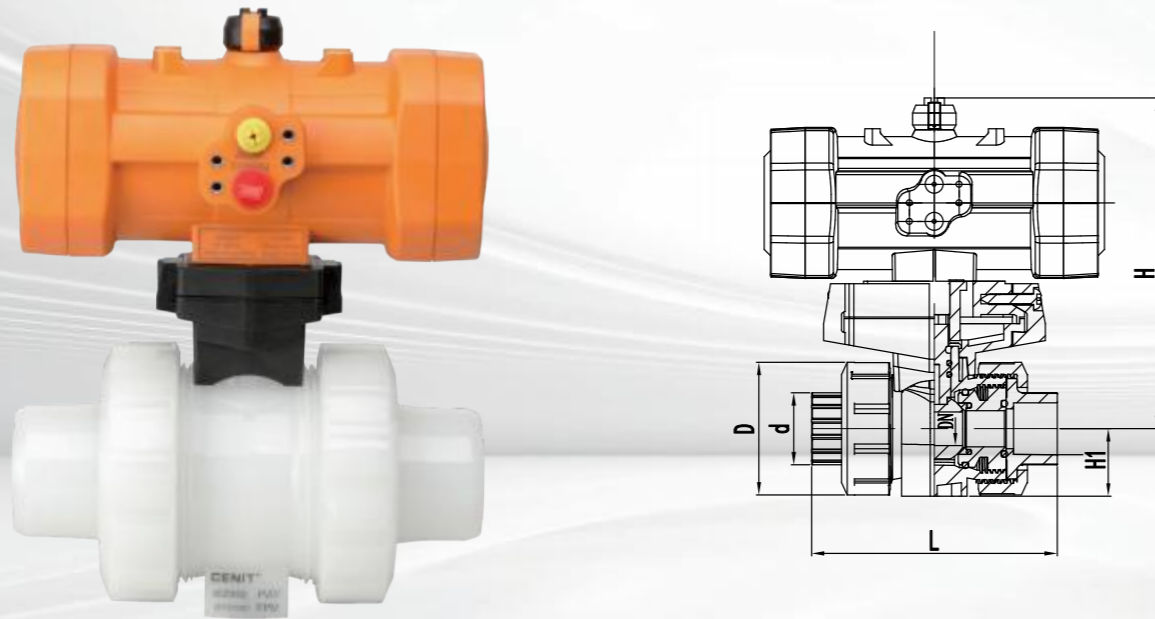
等级: PN16 Class: PN16 / 垫片: FPM O 型圈 Gasket: FPM O-ring
PTFE 球密封 Ball seals PTFE / 内置不锈钢固定螺帽 Inserting stainless fixed nut

产品参数

d (mm)	DN (mm)	D (mm)	L (mm)	L1 (mm)	H (mm)	H1 (mm)	T (mm)	weight (kg)
20	15	50.00	93.00	55.00	15.50	17.00	16.00	0.205
25	20	59.00	106.00	65.00	20.50	19.50	18.00	0.31
32	25	70.00	116.00	70.00	26.00	23.00	20.00	0.46
40	30	85.00	138.00	84.00	33.00	27.00	23.00	0.78
50	40	99.00	148.00	88.00	39.00	32.00	26.00	1.11
63	50	125.00	168.00	100.00	51.00	38.50	30.00	2.15

BUTT FUSION PLASTIC PNEUMATIC TRUE UNION BALL VALVE

对焊 全塑气动双由任球阀



等级: PN16 Class: PN16 / 垫片: FPM O 型圈 Gasket: FPM O-ring
PTFE 球密封 Ball seals PTFE / 内置不锈钢固定螺帽 Inserting stainless fixed nut

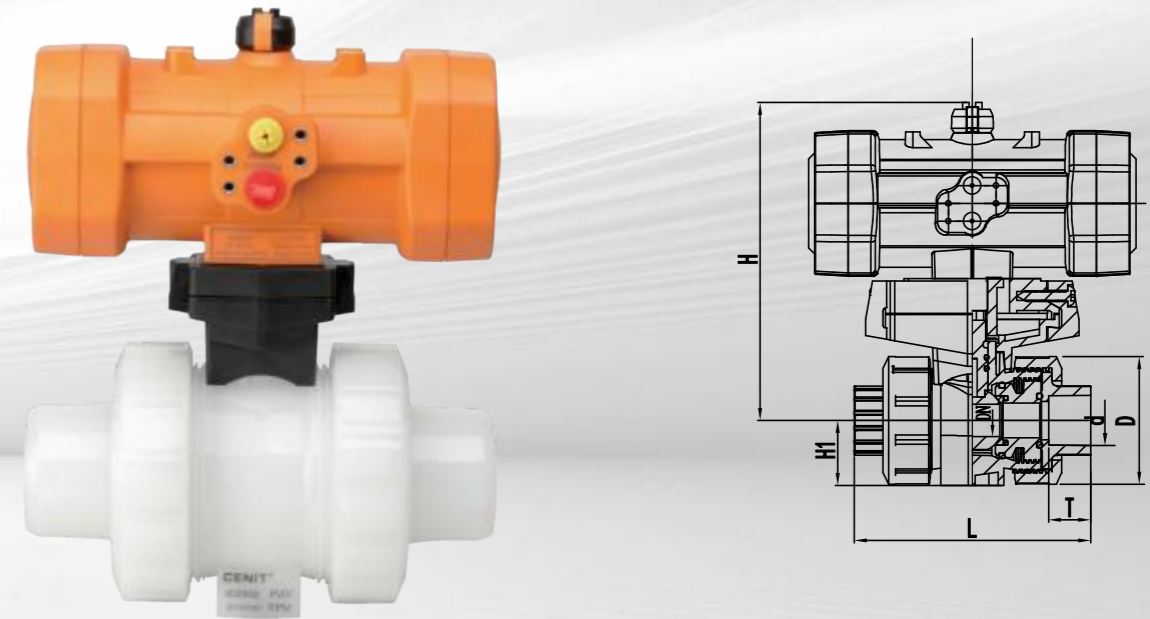
执行器: 单作用, 弹簧自动复位, 常闭
Actuator: Single-acting, Spring automatic return, normally closed
打开及关闭时间: 1~2 s
Open and close time: 1-2 s
全塑料外壳, 可以在高腐蚀环境中使用
It can be used in high corrosive environment as it is all plastic material
可以配套电磁阀及位置开关使用
Matching with solenoid valves and position switch

产品参数

d (mm)	DN (mm)	D (mm)	L (mm)	H (mm)	H1 (mm)
20	15	50.00	130.00	159.00	17.00
25	20	59.00	143.00	168.00	19.50
32	25	70.00	150.00	168.00	23.00
40	30	85.00	170.00	202.00	27.00
50	40	99.00	190.00	202.00	32.00
63	50	125.00	220.00	225.00	38.50

SOCKET FUSION PLASTIC PNEUMATIC TRUE UNION BALL VALVE

承插焊 全塑气动双由任球阀



等级: PN16 Class: PN16 / 垫片: FPM O 型圈 Gasket: FPM O-ring
PTFE 球密封 Ball seals PTFE / 内置不锈钢固定螺帽 Inserting stainless fixed nut

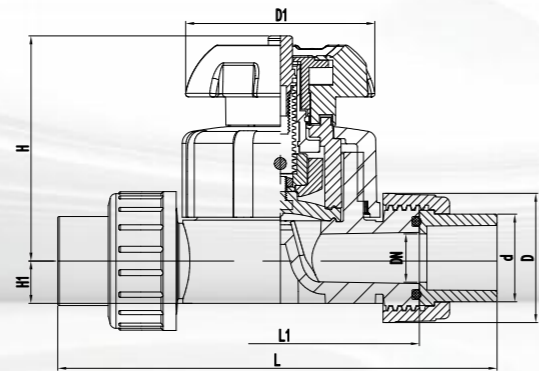
执行器: 单作用, 弹簧自动复位, 常闭
Actuator: Single-acting, Spring automatic return, normally closed
打开及关闭时间: 1~2 s
Open and close time: 1-2 s
全塑料外壳, 可以在高腐蚀环境中使用
It can be used in high corrosive environment as it is all plastic material
可以配套电磁阀及位置开关使用
Matching with solenoid valves and position switch

产品参数

d (mm)	DN (mm)	D (mm)	L (mm)	H (mm)	H1 (mm)	T (mm)
20	15	50.00	93.00	159.00	17.00	16.00
25	20	59.00	106.00	168.00	19.50	18.00
32	25	70.00	116.00	168.00	23.00	20.00
40	30	85.00	138.00	202.00	27.00	23.00
50	40	99.00	148.00	202.00	32.00	26.00
63	50	125.00	168.00	225.00	38.50	30.00

BUTT FUSION DIAPHRAGM VALVE

对焊 隔膜阀



等级: PN10 Class: PN10

垫片: FPM O 型圈, EPDM/PTFE 复合膜片 Gasket: FPM O-ring, EPDM/PTFE combined diaphragm

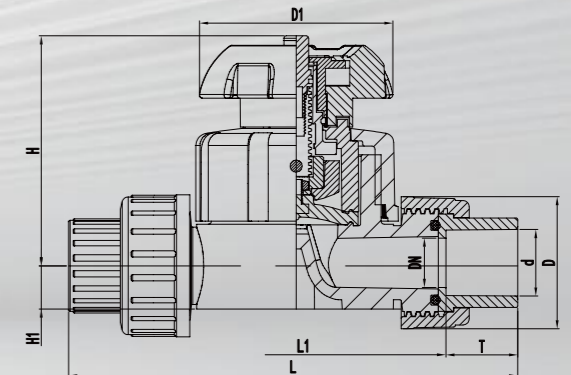
内置不锈钢固定螺帽 Inserting stainless fixed nut

产品参数

d (mm)	DN (mm)	D (mm)	L (mm)	L1 (mm)	H (mm)	H1 (mm)	D1 (mm)	weight (kg)
20	15	46.50	201.00	95.00	90.00	14.00	80.00	0.369
25	20	53.50	230.00	118.00	102.00	18.00	80.00	0.5
32	25	64.00	243.00	123.00	119.00	21.00	94.00	1.101
40	30	74.50	267.00	141.00	126.00	26.00	117.00	1.309
50	40	85.00	291.00	161.00	139.00	33.00	117.00	2.313
63	50	100.00	327.00	191.00	172.00	39.00	152.00	3.044

SOCKET FUSION DIAPHRAGM VALVE

承插焊 隔膜阀



等级: PN10 Class: PN10

垫片: FPM O 型圈, EPDM/PTFE 复合膜片 Gasket: FPM O-ring, EPDM/PTFE combined diaphragm

内置不锈钢固定螺帽 Inserting stainless fixed nut

产品参数

d (mm)	DN (mm)	D (mm)	L (mm)	L1 (mm)	H (mm)	H1 (mm)	D1 (mm)	weight (mm)	T (mm)
20	15	46.50	133.00	95.00	90.00	14.00	80.00	16.00	0.361
25	20	53.50	160.00	118.00	102.00	18.00	80.00	18.00	0.488
32	25	64.00	169.00	123.00	119.00	21.00	94.00	20.00	1.081
40	30	74.50	191.00	141.00	126.00	26.00	117.00	23.00	1.277
50	40	85.00	217.00	161.00	139.00	33.00	117.00	26.00	2.305
63	50	100.00	247.00	191.00	172.00	39.00	152.00	30.00	3.03

QUICK OPERATED PNEUMATIC DIAPHRAGM VALVE

快接气动隔膜阀



等级: PN6 Class: PN6 / 垫片: PTFE 膜片 Gasket: PTFE diaphragm

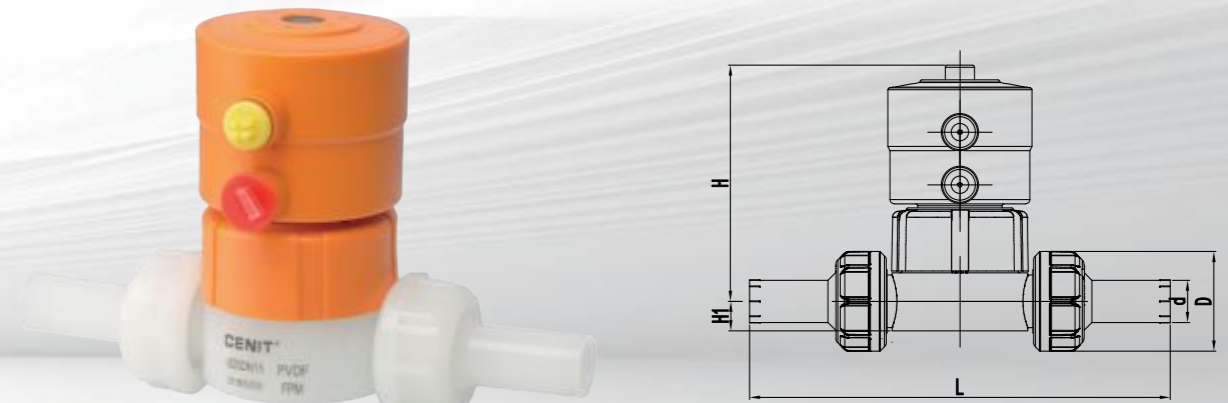
执行器: 单作用, 弹簧自动复位, 常闭
 Actuator: Single-acting, Spring automatic return, normally closed
 打开及关闭时间: 1~2 s
 Open and close time: 1-2 s
 全塑料外壳, 可以在高腐蚀环境中使用
 It can be used in high corrosive environment as it is all plastic material

产品参数

d (mm)	L (mm)	L1 (mm)	L2 (mm)	L3 (mm)	H (mm)	H1 (mm)	T (mm)
3/8"	106.00	65.00	51.00	22.00	78.00	12.50	6.20

BUTT FUSION PLASTIC PNEUMATIC DIAPHRAGM VALVE

对焊 全塑气动隔膜阀



等级: PN6 Class: PN6

垫片: FPM O 型圈, EPDM/PTFE 复合膜片 Gasket: FPM O-ring, EPDM/PTFE combined diaphragm
 内置不锈钢固定螺帽 Inserting stainless fixed nut

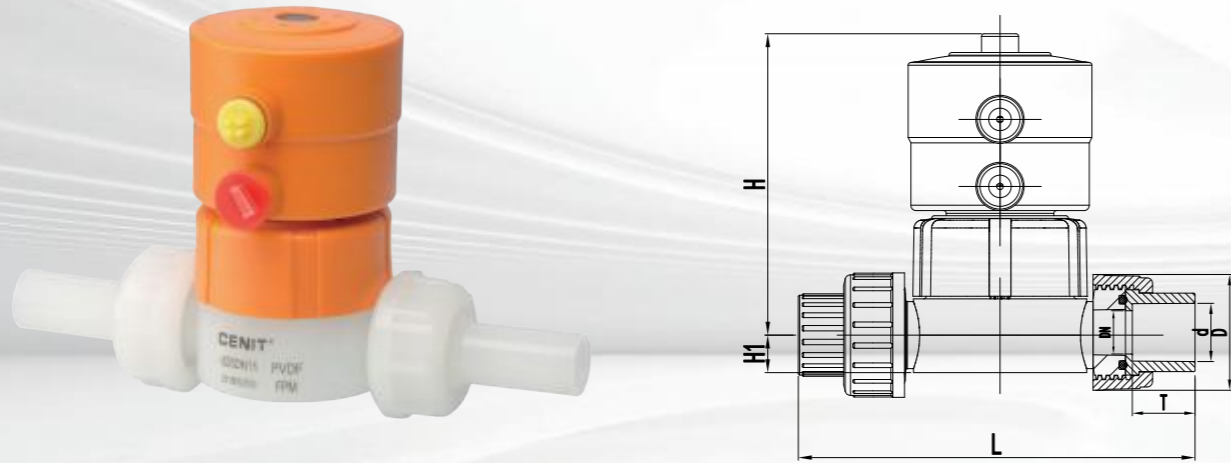
执行器: 单作用, 弹簧自动复位, 常闭
 Actuator: Single-acting, Spring automatic return, normally closed
 打开及关闭时间: 1~2 s
 Open and close time: 1-2 s
 全塑料外壳, 可以在高腐蚀环境中使用
 It can be used in high corrosive environment as it is all plastic material

产品参数

d (mm)	L (mm)	D (mm)	H (mm)	H1 (mm)
20	152.50	46.50	112.00	14.00
25	165.50	53.50	120.00	18.00

SOCKET FUSION PLASTIC PNEUMATIC DIAPHRAGM VALVE

承插焊 全塑气动隔膜阀



等级: PN6 Class: PN6

垫片: FPM O 型圈, EPDM/PTFE 复合膜片 Gasket: FPM O-ring, EPDM/PTFE combined diaphragm

内置不锈钢固定螺帽 Inserting stainless fixed nut

执行器: 单作用, 弹簧自动复位, 常闭

Actuator: Single-acting, Spring automatic return, normally closed

打开及关闭时间: 1~2 s

Open and close time: 1-2 s

全塑料外壳, 可以在高腐蚀环境中使用

It can be used in high corrosive environment as it is all plastic material

产品参数

d (mm)	L (mm)	D (mm)	H (mm)	H1 (mm)
20	84.50	46.50	112.00	14.00
25	95.50	53.50	120.00	18.00

EXPERT IN PIPING SYSTEM

管路系统的专家级工厂



微信公众号二维码



企业网站二维码

 **400-928-1588**

华生管道科技有限公司

地址：常州市新北区空港产业园旺贤路9号(213133)
电话：+86 519-85201808 83201080
传真：+86 519-83201088 83201026
邮箱：sales@czhuasheng.com
info@czhuasheng.com
网址：www.czhuasheng.com

HUASHENG PIPELINE TECHNOLOGY CO., LTD

Add: NO9, Wangxian Road, Konggang Industry Park, Xinbei District, Changzhou, 213133, China
Tel: +86 519-85201808 83201080
Fax: +86 519-83201088 83201026
Email: sales@czhuasheng.com
info@czhuasheng.com
Web: www.huashengpipe.com